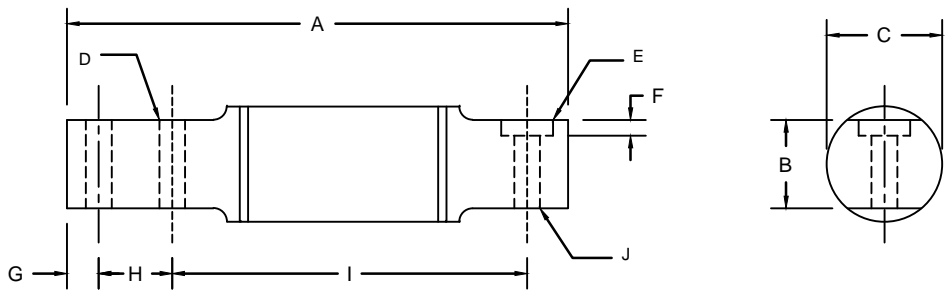


REVISIONS							
ZONE	LTR.	DESCRIPTION	DATE	ECN	BY	CKD	APVD
-	-	INITIAL RELEASE	10/01/08	-	-	-	-
-	B	EDIT DIMENSION TABLE	9/09/09	-	-	-	-
-	C	REDRAWN FOR LABELING CONSISTENCY	12/15/15	2016-74	TB	AB	AA



PERFORMANCE SPECIFICATIONS:

- CAPACITIES: 50LB, 100LB, 200LB, 250LB, 500LB, 1KSE, 1KLE, 2.5K, 5K, & 7.5K LB
- RATED OUTPUT: 2.00 mV/V \pm 0.1%
- SAFE OVERLOAD: 150% FS
- EXCITATION VOLTAGE: 10-20V AC/DC
- INPUT RESISTANCE: 50LB - 1KSE 800 \pm 10 OHMS (1KLE - 7.5K 380 \pm 10 OHMS)
- OUTPUT RESISTANCE: 50LB - 1KSE 750 \pm 3 OHMS (1KLE - 7.5K 350 \pm 3 OHMS)
- ZERO BALANCE: \pm 1.00% FS
- SEAL TYPE: ENVIRONMENTALLY SEALED
- NON-LINEARITY: \pm 0.03% FS
- HYSTERESIS: \pm 0.03% FS
- REPEATABILITY: \pm 0.01% FS
- CREEP: \pm 0.02% FS
- COMPENSATED TEMPERATURE RANGE: -10°C - +40°C
- TEMPERATURE EFFECT ON ZERO: \pm 0.0027%FS/°C
- TEMPERATURE EFFECT ON OUTPUT: \pm 0.0015%FS/°C
- INSULATION RESISTANCE: >5000 MEGOHMS
- LOAD CELL CABLE: 4 CONDUCTOR, 30 FT
- LOAD CELL WIRING:
 - GREEN +EXC
 - BLACK -EXC
 - WHITE +SIG
 - RED -SIG
 - BRAID/YELLOW: SHEILD
- FM APPROVED

RATED CAPACITY	DIMENSIONS									
	A	B	C	D	E	F	G	H	I	J
50LB-100LB	6.00	1.06	1.26	0.31	-	-	0.38	0.88	4.25	0.31
200LB-1KSE	6.62	1.06	1.26	0.51	-	-	0.50	1.12	4.25	0.51
1KLE-2.5K	11.38	1.25	2.00	0.53	1.19	0.12	0.50	1.75	8.25	0.62
5K-7.5K	12.75	2.75	3.50	0.78	1.38	0.19	0.75	2.00	8.50	0.76

"DO NOT ALTER WITHOUT AGENCY NOTIFICATION"

COTI GLOBAL SENSORS, INC.

CG-BBS SINGLE ENDED BEAM LOAD CELL

APPROVALS		DATE
DRAWN:	DH	9/09/09
CHECKED:	MB	9/09/09
ENGINEER:	DH	9/09/09
APPROVED:	AA	9/09/09
MATERIAL		
STAINLESS STEEL		

THIS DOCUMENT CONTAINS PROPRIETARY INFORMATION AND SUCH INFORMATION MAY NOT BE REPRODUCED OR DISCLOSED FOR ANY PURPOSE OR USED TO PRODUCE THE ARTICLE OR SUBJECT WITHOUT WRITTEN PERMISSION FROM COTI GLOBAL SENSORS, INC.

TOLERANCES UNLESS OTHERWISE SPECIFIED
 .XX \pm 0.01
 .XXX \pm 0.005
 FRACTIONS \pm 1/16"
 ANGLES: \pm 1/2°

SCALE	SIZE	PART/DRAWING NO.	REV.
NONE	B	DOD-CG-BBS	C
MODEL	CG-BBS	SHEET	1 OF 1