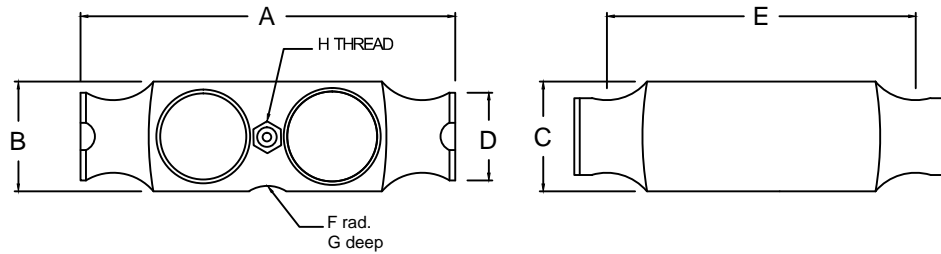


REVISIONS

ZONE	LTR.	DESCRIPTION	DATE	ECN	BY	CKD	APVD
-	-	INITIAL RELEASE	10/01/08	-	-	-	-
-	B	FIXED MEASUREMENT F	7/10/09	-	-	-	-
-	C	REDRAWN FOR LABELING CONSISTENCY	12/15/15	2016-54	TB	AB	AA



PERFORMANCE SPECIFICATIONS:

- CAPACITIES: 50KSE, 60KSE
- RATED OUTPUT: 3.00 mV/V $\pm 0.1\%$
- SAFE OVERLOAD: 150% FS
- EXCITATION VOLTAGE: 10-20V AC/DC
- INPUT RESISTANCE: 700 ± 10 OHMS
- OUTPUT RESISTANCE: 700 ± 5 OHMS
- ZERO BALANCE: $\pm 1.00\%$ FS
- SEAL TYPE: ENVIRONMENTALLY SEALED, IP67
- NON-LINEARITY: $\pm 0.03\%$ FS
- HYSTERESIS: $\pm 0.02\%$ FS
- REPEATABILITY: $\pm 0.01\%$ FS
- CREEP: $\pm 0.02\%$ FS
- NTEP RATED
- CLASS 111L 10,000 DIVISION, MULTIPLE CELL
- COMPENSATED TEMPERATURE RANGE: $-10^{\circ}\text{C} - +40^{\circ}\text{C}$
- TEMPERATURE EFFECT ON ZERO: $\pm 0.0027\%$ FS/ $^{\circ}\text{C}$
- TEMPERATURE EFFECT ON OUTPUT: $\pm 0.0015\%$ FS/ $^{\circ}\text{C}$
- INSULATION RESISTANCE: >5000 MEGOHMS
- LOAD CELL CABLE: 4 CONDUCTOR, 50 FT BRAIDED SHIELD
- LOAD CELL WIRING:
 - GREEN +EXC
 - BLACK -EXC
 - WHITE +SIG
 - RED -SIG
 - BRAID/YELLOW: SHIELD
- FM APPROVED

RATED CAPACITY	DIMENSIONS							
	A	B	C	D	E	F	G	I
50Kse-60Kse	8.25	2.45	1.94	2.00	7.25	0.50	0.07	1/2-14 NPT

DO NOT ALTER WITHOUT AGENCY NOTIFICATION

COTI GLOBAL SENSORS, INC.

CG-80210
NTEP LOAD CELL

APPROVALS		DATE	SCALE	SIZE	PART/DRAWING NO.	REV.
DRAWN:	MTSI	10/01/08				
CHECKED:	MB	10/01/08				
ENGINEER:	AA	10/01/08				
APPROVED:	AA	10/01/08				
MATERIAL						
ALLOY STEEL						
THIS DOCUMENT CONTAINS PROPRIETARY INFORMATION AND SUCH INFORMATION MAY NOT BE REPRODUCED OR DISCLOSED FOR ANY PURPOSE OR USED TO PRODUCE THE ARTICLE OR SUBJECT WITHOUT WRITTEN PERMISSION FROM COTI GLOBAL SENSORS, INC.			TOLERANCES UNLESS OTHERWISE SPECIFIED .XX- ± 0.01 .XXX- ± 0.005 FRACTIONS- $\pm 1/16^{\circ}$ ANGLES: $\pm 1/2^{\circ}$			
THIS DRAWING USES THIRD ANGLE PROJECTION			MODEL CG-80210 SHEET 1 OF 1			