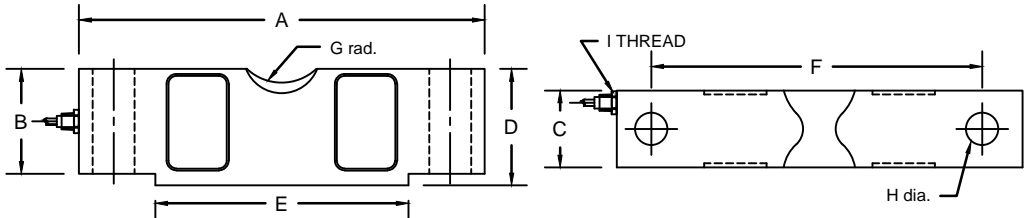


REVISIONS							
ZONE	LTR.	DESCRIPTION	DATE	ECN	BY	CKD	APVD
-	-	INITIAL RELEASE	10/01/08	-	-	-	-
-	B	EDIT DIMENSION TABLE	9/14/09	-	-	-	-
-	D	REDRAWN FOR LABELING CONSISTENCY	12/15/15	2016-58	TB	AB	AA

\*NON-NTEP

PERFORMANCE SPECIFICATIONS:

- CAPACITIES: \*10K, \*20K, 25K, 40K, 50KSE, 50K, 60K, 75K, 100K, & 125K LB
- RATED OUTPUT: 3.00 mV/V ±0.25%
- SAFE OVERLOAD: 150% FS
- EXCITATION VOLTAGE: 10-20V AC/DC
- INPUT RESISTANCE: 700 ±10 OHMS
- OUTPUT RESISTANCE: 700 ±5 OHMS
- ZERO BALANCE: ±1.00% FS
- SEAL TYPE: ENVIRONMENTALLY SEALED, IP67
- NON-LINEARITY: ±0.03% FS
- HYSTERESIS: ±0.02% FS
- REPEATABILITY: ±0.01% FS
- CREEP: ±0.02% FS
- NTEP RATED
- CLASS 111L 10,000 DIVISION, MULTIPLE CELL
- COMPENSATED TEMPERATURE RANGE: -10°C - +40°C
- TEMPERATURE EFFECT ON ZERO: ±0.0027%FS/°C
- TEMPERATURE EFFECT ON OUTPUT: ±0.0015%FS/°C
- INSULATION RESISTANCE: >5000 MEGOHMS
- LOAD CELL CABLE: 4 CONDUCTOR, 50 FT BRAIDED SHIELD
- LOAD CELL WIRING:
  - GREEN +EXC
  - BLACK -EXC
  - WHITE +SIG
  - RED -SIG
  - BRAID/YELLOW: SHEILD
- FM APPROVED



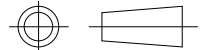
RATED CAPACITY	DIMENSIONS								
	A	B	C	D	E	F	G	H	I
10K-25K	7.75	1.70	1.69	1.94	5.00	6.50	0.75	0.68	1/4-18NPT
40K-50KSE	10.25	2.10	1.94	2.44	6.39	8.50	1.00	0.81	1/4-18NPT
50K-75K	10.25	2.65	2.44	2.94	6.39	8.50	1.00	1.06	1/2-14NPT
100K-125K	15.25	3.43	2.90	3.86	9.00	12.75	1.50	1.62	1/2-14NPT

"DO NOT ALTER WITHOUT AGENCY NOTIFICATION"

COTI GLOBAL SENSORS, INC.

CG-58 DOUBLE ENDED BEAM  
NTEP LOAD CELL

APPROVALS		DATE
DRAWN: DH		9/14/09
CHECKED: MB		9/14/09
ENGINEER: DH		9/14/09
APPROVED: AA		9/14/09
MATERIAL		
ALLOY STEEL		



THIS DOCUMENT CONTAINS PROPRIETARY INFORMATION AND SUCH INFORMATION MAY NOT BE REPRODUCED OR DISCLOSED FOR ANY PURPOSE OR USED TO PRODUCE THE ARTICLE OR SUBJECT WITHOUT WRITTEN PERMISSION FROM COTI GLOBAL SENSORS, INC.

TOLERANCES UNLESS OTHERWISE SPECIFIED  
 .XX±.01  
 .XXX±.005  
 FRACTIONS±1/16"  
 ANGLES: ±1/2°

SCALE	SIZE	PART/DRAWING NO.	REV.
NONE	B	DOD-CG-58	D
MODEL CG-58			SHEET 1 OF 1