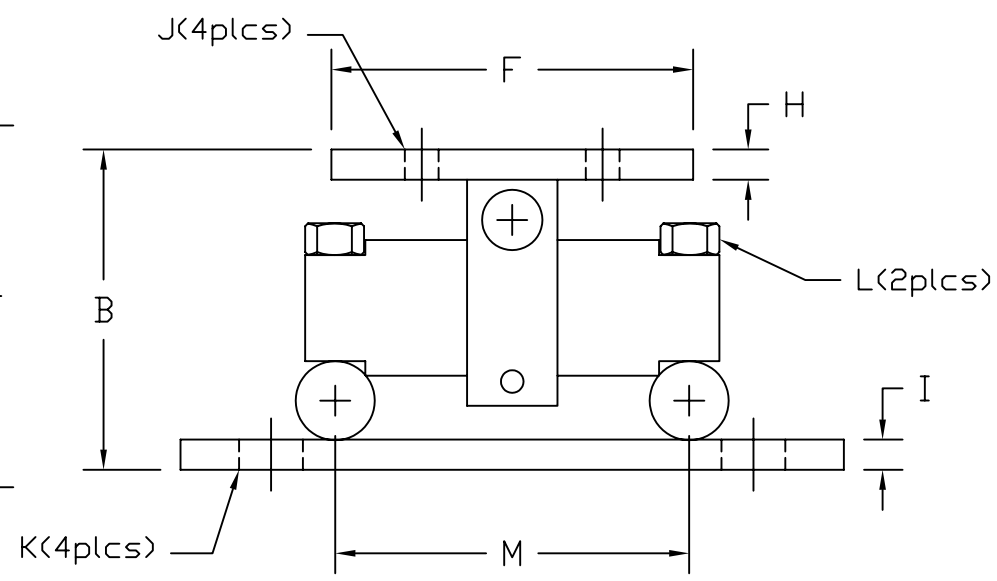
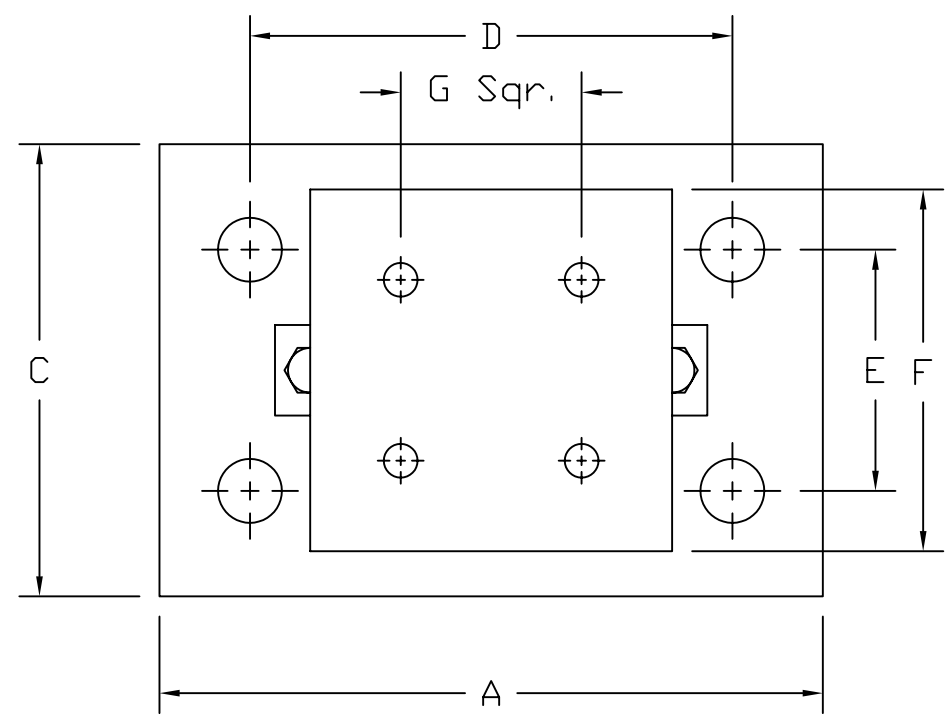


| REVISIONS |      |                 |          |     |    |     |      |
|-----------|------|-----------------|----------|-----|----|-----|------|
| ZONE      | LTR. | DESCRIPTION     | DATE     | ECN | BY | CKD | APVD |
| -         | -    | INITIAL RELEASE | 10/01/08 | -   | -  | -   | -    |



**PERFORMANCE SPECIFICATIONS:**

- CAPACITIES: 5K, 10K, 20K, 30K, 40K, 50K, 60K, 100K, 150K, 200K, & 250K LB
- SAFE OVERLOAD: 150% FS
- FULL SCALE OUTPUT: 3.00 mV/V
- EXCITATION VOLTAGE: 10-15V AC/DC
- LOAD CELL RESISTANCE: 700 OHMS
- LOAD CELL CABLE: 4 CONDUCTOR, 50 FT (BRAIDED SHIELD)
- OPERATING TEMPERATURE RANGE: -20°C - +60°C
- MATERIAL  
LOAD CELL: ALLOY STEEL (NICKEL PLATED) OR STAINLESS STEEL  
ASSEMBLY: MILD STEEL (NICKEL PLATED) OR STAINLESS STEEL

| RATED CAPACITY | DIMENSIONS |       |       |       |      |       |      |      |      |      |      |             |       |
|----------------|------------|-------|-------|-------|------|-------|------|------|------|------|------|-------------|-------|
|                | A          | B     | C     | D     | E    | F     | G    | H    | I    | J    | K    | L           | M     |
| 5K-20K         | 11.00      | 5.31  | 7.50  | 8.00  | 4.00 | 6.00  | 3.00 | 0.50 | 0.75 | 0.56 | 1.06 | 5/8-18UNF   | 6.87  |
| 30K-60K        | 15.00      | 8.43  | 10.00 | 11.50 | 6.00 | 8.00  | 5.12 | 0.75 | 1.00 | 0.68 | 1.19 | 1-14UNF     | 8.50  |
| 100K           | 18.00      | 10.37 | 12.00 | 14.00 | 9.00 | 10.00 | 7.50 | 1.25 | 1.25 | 0.81 | 1.38 | 1-14UNF     | 9.50  |
| 150K           | 18.00      | 10.37 | 12.00 | 14.00 | 9.00 | 10.00 | 7.50 | 1.25 | 1.25 | 0.81 | 1.38 | 1-14UNF     | 9.50  |
| 200K-250K      | 26.00      | 16.75 | 12.00 | 20.00 | 6.00 | 12.00 | 9.00 | 2.00 | 2.00 | 1.06 | 1.88 | 1 1/2-12UNF | 13.00 |

\*DO NOT ALTER WITHOUT AGENCY NOTIFICATION\*

**COTI GLOBAL SENSORS, INC.**

**CG-03M  
TANK MOUNT**

|   |   |  |          |
|---|---|--|----------|
| <p>THIS DRAWING USES THIRD ANGLE PROJECTION</p>   | APPROVALS   |  | DATE     |
|   | DRAWN: MTSI   |  | 10/01/08 |
|   | CHECKED: MB   |  | 10/01/08 |
|   | ENGINEER: AA  |  | 10/01/08 |
|   | APPROVED: AA  |  | 10/01/08 |
| <p>THIS DOCUMENT CONTAINS PROPRIETARY INFORMATION AND SUCH INFORMATION MAY NOT BE REPRODUCED OR DISCLOSED FOR ANY PURPOSE OR USED TO PRODUCE THE ARTICLE OR SUBJECT WITHOUT WRITTEN PERMISSION FROM COTI GLOBAL SENSORS, INC.</p> | TOLERANCES UNLESS OTHERWISE SPECIFIED                       |  |          |
|   | .XX-±.01<br>.XXX-±.005<br>FRACTIONS-±1/16"<br>ANGLES: ±1/2" |  |          |
| MATERIAL  |   |  |          |
| SEE NOTES   |   |  |          |

|              |      |                  |      |
|--------------|------|------------------|------|
| SCALE        | SIZE | PART/DRAWING NO. | REV. |
| NONE         | B    | DOD-CG-03M       | -    |
| MODEL CG-03M |      | SHEET 1 OF 1     |      |