

ISOLATED TENSION MOUNT

WITH NTEP "S" CELL

Designed for use in medium capacity tanks, hoppers, and conveyors. The unique swivel design combines multidirectional movement with self checking capabilities. Ideal for indoor or outdoor process control applications. Double electrical isolation with teflon insulator and bonding strap, provides added protection to load cell. Height adjustment available on each module. Load cell thread pattern matches suspension or tension rod thread pattern.

Aircraft grade, stainless steel, load stem provides added strength and durability. Main housing is made out of cold drawn steel and coated with Zinc and Clear Chromate plating. Entire assembly will meet or exceed IP67 rating with the appropriate load cell.



FEATURES & APPLICATIONS

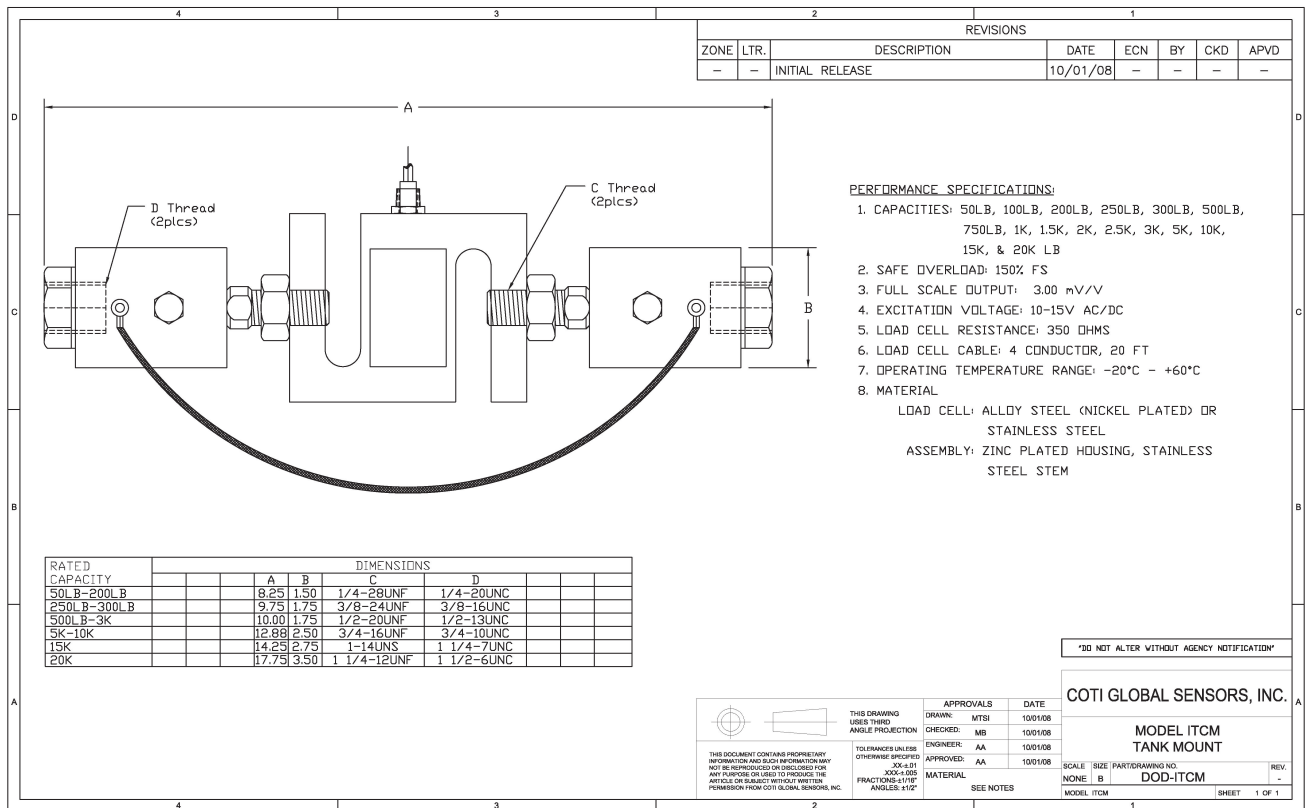
Features:

- 25 lbs. to 20,000 lbs.
- Self-aligning
- Provides correct load cell loading an adverse installations
- Center pivoted tension loading
- Easy installation
- Adjustable height
- Electrical load cell isolation
- Thermal Expansion & contraction

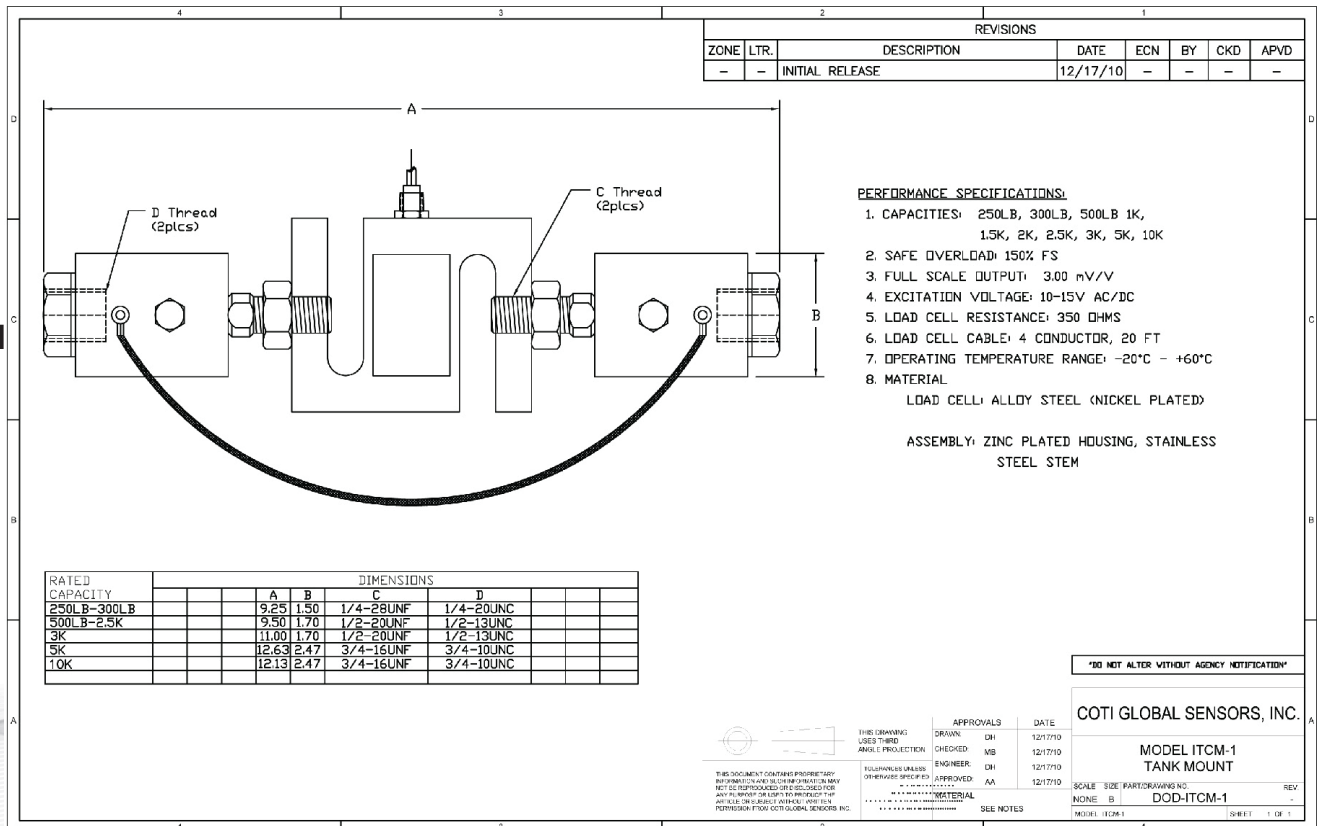
Applications:

- Powder & Bulk Processing
- Mixing, Blending, & Batching
- Light to Medium Capacity Tanks & Hoppers
- Level & Inventory Control
- Food & Beverage Handling
- Hostile Environment
- Scale Conversions

With CGSB
Load Cell



With CGSB-1
Load Cell



INSTALLATION

Tension Mount Assemblies are designed for steelyard conversions of mechanical scales or tension mounting of weigh vessels with 1, 2, 3, or 4 load cells. Use care to ensure straight, vertical mechanical connections and approximate even loading (when multiple load cells are used). Avoid excessive shock loads, swaying, or vibration. After the mount is installed, the transverse lever should be as close to level as possible in steelyard installations. Threaded connections must use lock washers and jam nuts. Lugs are provided for an optional grounding strap (recommended) which will conduct stray voltages from accident or lightning safely around the load cell.

For best accuracy, care must be taken to provide flexible plumbing, air, hydraulic, or any supply connections for minimum external influence on the scale system. Vacuum or pressure used for loading the tank can have an effect on system accuracy, as can swaying or vibration from mixers, motors, or supporting structure. Horizontal checking with flexible connections may be required.

BASIC INSTALLATION STEPS

Although each application is unique, there are several basic steps that can be followed in installation.

1. Jack up or block the hopper, tank, or transverse lever structure to be mounted.
2. Assemble the Tension Mount Assemblies to the load cell(s), ensuring that all threads are engaged, protruding slightly on the opposite side. Secure with lock washers and jam nuts provided.
3. Measure and cut threaded rod for top and bottom installation.
4. Carefully premount the assembly to the support structure or beam flange as per the diagram provided.
5. Position the vessel; mating the bottom end to the mounting flange.
6. Gently lower the vessel to the supported position. Check that the vessel is level and plumb, readjusting hardware as needed.
7. Tighten all connections securely-- USE LOCK WASHERS AND JAM NUTS. Recheck all connections.
8. Wire the load cell(s) according to the manufacturer's instructions.
9. Install the ground strap to lugs provided (optional).

IMPORTANT SAFETY NOTICE

It is the responsibility of the installer to ensure that rated safe working loads are not exceeded; that adequate safety restraints or chains are used to prevent any possibility of injury; to inspect and verify the integrity of all supporting structures; to verify complete engagement of threads; and to use lock washers and jam nuts at all mechanical connections. Correctly rated mounting hardware must consider the potential for shock or side forces, which can easily exceed the anticipated safe working load. Weight bearing components provided by others must have a minimum strength of at least four times the anticipated total weight.



Coti Global Sensors
MANUFACTURING
Weighing Products Worldwide

Coti Global Sensors manufactures and supplies load cells to companies worldwide. We carry one of the largest selections of load cells available from any manufacturer. Coti Global manufactures all types of load cells, from single point load cells to double ended beams.

We also sell floor scales, junction boxes, remote displays and other weighing equipment hardware. Our product certifications include NTEP, Factory Mutual Approvals, UBC Seismic Approvals and VCAP.

Coti Global Sensors | 1.866.762.2684 | www.cotiglobal.com | sales@cotiglobal.com