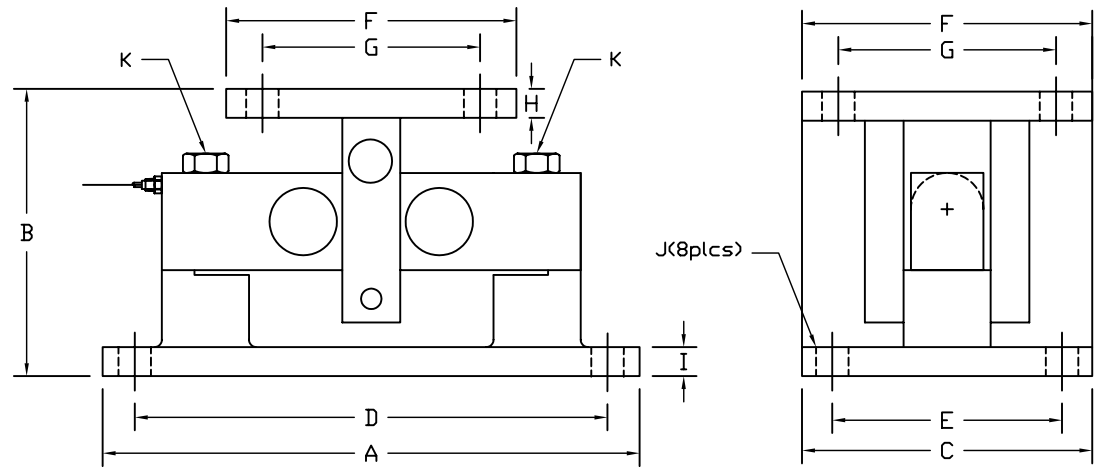


REVISIONS							
ZONE	LTR.	DESCRIPTION	DATE	ECN	BY	CKD	APVD
-	-	INITIAL RELEASE	10/01/08	-	-	-	-



PERFORMANCE SPECIFICATIONS:

- CAPACITIES: 10K, 20K, 25K, 40K, 50KSE, 50K, 60K, 75K, 100K, & 125K LB
- SAFE OVERLOAD: 150% FS
- FULL SCALE OUTPUT: 3.00 mV/V
- EXCITATION VOLTAGE: 10-15V AC/DC
- LOAD CELL RESISTANCE: 700 OHMS
- LOAD CELL CABLE: 4 CONDUCTOR, 50 FT (BRAIDED SHIELD)
- OPERATING TEMPERATURE RANGE: -20°C - +60°C
- MATERIAL
LOAD CELL: ALLOY STEEL (NICKEL PLATED) OR STAINLESS STEEL
ASSEMBLY: MILD STEEL OR STAINLESS STEEL

RATED CAPACITY	DIMENSIONS										
	A	B	C	D	E	F	G	H	I	J	K
10K-25K	10.00	6.50	8.00	7.50	6.00	8.00	6.00	0.75	0.75	0.78	5/8-11UNC
40K-50KSE	14.00	7.80	10.00	11.50	7.50	8.00	6.00	0.75	1.00	1.12	3/4-16UNF
50K-75K	14.00	9.50	10.00	11.50	7.50	9.00	6.50	1.00	1.00	1.12	1-14UNF
100K-125K	25.00	14.75	16.00	20.00	11.00	12.00	8.00	1.50	1.50	1.63	1-1/2-12UNF

DO NOT ALTER WITHOUT AGENCY NOTIFICATION

COTI GLOBAL SENSORS, INC.

**CG-TWA
TANK MOUNT**

SCALE	SIZE	PART/DRAWING NO.	REV.
NONE	B	DOD-CG-TWA	A
MODEL CG-TWA		SHEET 1 OF 1	

<p>THIS DRAWING USES THIRD ANGLE PROJECTION</p>	APPROVALS	DATE
	DRAWN: MTSI	10/01/08
	CHECKED: MB	10/01/08
	ENGINEER: AA	10/01/08
<p>THIS DOCUMENT CONTAINS PROPRIETARY INFORMATION AND SUCH INFORMATION MAY NOT BE REPRODUCED OR DISCLOSED FOR ANY PURPOSE OR USED TO PRODUCE THE ARTICLE OR SUBJECT WITHOUT WRITTEN PERMISSION FROM COTI GLOBAL SENSORS, INC.</p>	APPROVED: AA	10/01/08
	MATERIAL	SEE NOTES
<p>TOLERANCES UNLESS OTHERWISE SPECIFIED .XX-±.01 .XXX-±.005 FRACTIONS-±1/16" ANGLES: ±1/2°</p>		