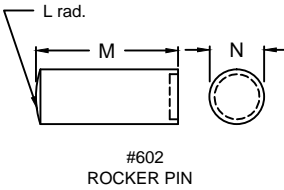
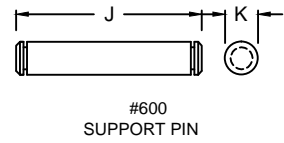
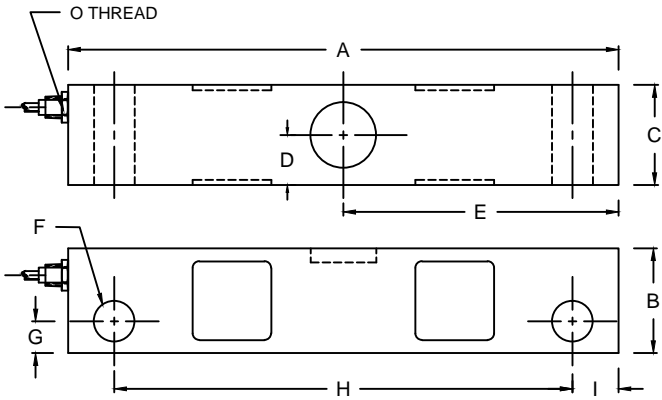


REVISIONS							
ZONE	LTR.	DESCRIPTION	DATE	ECN	BY	CKD	APVD
-	-	INITIAL RELEASE	10/01/08	-	-	-	-
-	C	REDRAWN FOR LABELING CONSISTENCY	12/15/15	2016-47	TB	AB	AA



- PERFORMANCE SPECIFICATIONS:**
- CAPACITIES: 40K & 50K LB
  - RATED OUTPUT: 3.00 mV/V  $\pm 0.1\%$
  - SAFE OVERLOAD: 150% FS
  - EXCITATION VOLTAGE: 10-20V AC/DC
  - INPUT RESISTANCE: 700  $\pm 10$  OHMS
  - OUTPUT RESISTANCE: 700  $\pm 5$  OHMS
  - ZERO BALANCE:  $\pm 1.00\%$  FS
  - SEAL TYPE: ENVIRONMENTALLY SEALED, IP67
  - NON-LINEARITY:  $\pm 0.03\%$  FS
  - HYSTERESIS:  $\pm 0.02\%$  FS
  - REPEATABILITY:  $\pm 0.01\%$  FS
  - CREEP:  $\pm 0.02\%$  FS
  - NTEP RATED
  - CLASS 111L 10,000 DIVISION, MULTIPLE CELL
  - COMPENSATED TEMPERATURE RANGE:  $-10^{\circ}\text{C} - +40^{\circ}\text{C}$
  - TEMPERATURE EFFECT ON ZERO:  $\pm 0.0027\%/^{\circ}\text{C}$
  - TEMPERATURE EFFECT ON OUTPUT:  $\pm 0.0015\%/^{\circ}\text{C}$
  - INSULATION RESISTANCE:  $>5000$  MEGOHMS
  - LOAD CELL CABLE: 4 CONDUCTOR, 60 FT BRAIDED SHIELD
  - LOAD CELL WIRING:
    - GREEN +EXC
    - BLACK -EXC
    - WHITE +SIG
    - RED -SIG
    - BRAID/YELLOW: SHEILD
  - FM APPROVED

RATED CAPACITY	DIMENSIONS														
	A	B	C	D	E	F	G	H	I	J	K	L	M	N	O
40K-50K	10.50	2.00	1.91	0.95	5.25	0.78	0.61	8.75	0.88	-	-	-	-	-	1/2-14 NPT
#600 Support Pin	-	-	-	-	-	-	-	-	-	4.25	0.75	-	-	-	-
#602 Rocker Pin	-	-	-	-	-	-	-	-	-	-	-	12.00	3.25	1.25	-

"DO NOT ALTER WITHOUT AGENCY NOTIFICATION"

**COTI GLOBAL SENSORS, INC.**  
**CG-STR DOUBLE-ENDED BEAM**  
**NTEP LOAD CELL**

APPROVALS		DATE
DRAWN: MTSI		10/01/08
CHECKED: MB		10/01/08
ENGINEER: AA		10/01/08
APPROVED: AA		10/01/08
MATERIAL		
ALLOY STEEL		

THIS DOCUMENT CONTAINS PROPRIETARY INFORMATION AND SUCH INFORMATION MAY NOT BE REPRODUCED OR DISCLOSED FOR ANY PURPOSE OR USED TO PRODUCE THE ARTICLE OR SUBJECT WITHOUT WRITTEN PERMISSION FROM COTI GLOBAL SENSORS, INC.

TOLERANCES UNLESS OTHERWISE SPECIFIED  
 .XX- $\pm 0.01$   
 .XXX- $\pm 0.005$   
 FRACTIONS- $\pm 1/16"$   
 ANGLES:  $\pm 1/2^{\circ}$

SCALE	SIZE	PART/DRAWING NO.	REV.
NONE	B	DOD-CG-STR	C
MODEL CG-STR		SHEET 1 OF 1	