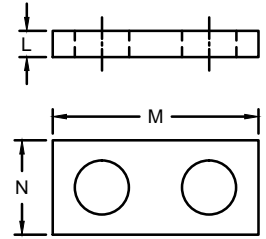
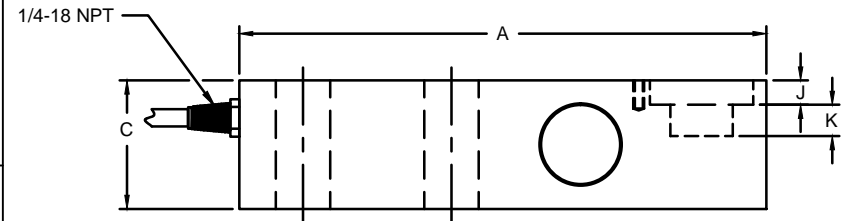
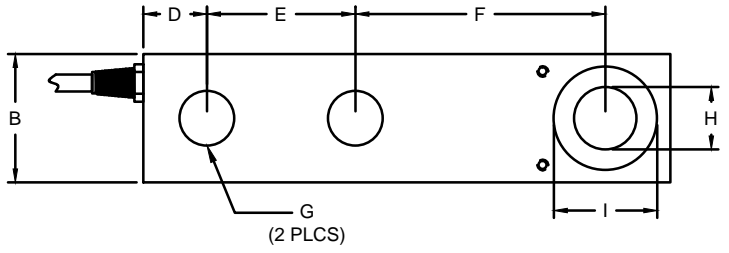


ZONE		REVISIONS			DATE			BY			CKD			APVD		
-	B	REDRAWN FOR LABELING CONSISTENCY			06/16/15	2016-72	RLU	JSP	AA							



#653 SPACER PLATE

PERFORMANCE SPECIFICATIONS:

1. CAPACITIES: 35K, 45K. (LB)
2. RATED OUTPUT: 2.00 mV/V ±0.25%.
3. SAFE OVERLOAD: 150% FS.
4. EXCITATION VOLTAGE: 10V AC/DC (15V MAX).
5. INPUT RESISTANCE: 380 ±10Ω.
6. OUTPUT RESISTANCE: 350 ±3Ω.
7. ZERO BALANCE: ±1.00% FS.
8. SEAL TYPE: ENVIRONMENTALLY-SEAL IP67.
9. NON-LINEARITY: ±0.03% FS.
10. HYSTERESIS: ±0.03% FS.
11. REPEATABILITY: ±0.01% FS.
12. CREEP: ±0.02% FS IN 30 MINUTES.
13. COMPENSATED TEMPERATURE RANGE: -10°C TO +40°C.
14. TEMPERATURE EFFECT ON ZERO: ±0.0027% FS/°C.
15. TEMPERATURE EFFECT ON OUTPUT: ±0.0015% FS/°C.
16. INSULATION RESISTANCE: 5000 MEGOHMS.
17. LOAD CELL CABLE: 4-22AWG, Ø6.8MM, BRAIDED, 50FT.
18. LOAD CELL WIRING:
 GRN (+EXC)
 BLK (-EXC)
 WHT (+SIG)
 RED (-SIG)
 BRAID/YELLOW: SHIELD
19. FM APPROVED.

RATED CAPACITY	DIMENSIONS													
	A	B	C	D	E	F	G	H	I	J	K	L	M	N
35K - 45K	12.50	2.75	2.75	1.25	3.50	6.25	1.31	1.50	2.00	0.38	0.94	-	-	-
#653	-	-	-	-	-	-	-	-	-	-	-	0.50	6.00	2.75

DO NOT ALTER WITHOUT AGENCY NOTIFICATION

COTI GLOBAL SENSORS, INC.

CG - SMB6
LOAD CELL

<p>THIS DOCUMENT CONTAINS PROPRIETARY INFORMATION AND SUCH INFORMATION MAY NOT BE REPRODUCED OR DISCLOSED FOR ANY PURPOSE OR USED TO PRODUCE THE ARTICLE OR SUBJECT WITHOUT WRITTEN PERMISSION FROM COTI GLOBAL SENSORS, INC.</p>	<p>THIS DRAWING USES THIRD ANGLE PROJECTION</p>	<p>TOLERANCES UNLESS OTHERWISE SPECIFIED .XX = ±0.02" .XXX = ±0.005" .XXXX = ±0.0002" FRACTIONS: ±1/16" ANGLES DEC: ±18</p>	APPROVALS		DATE
			DRAWN: RLU	06/16/15	
			CHECKED: AA	06/16/15	
			ENGINEER: JSP	06/16/15	
			APPROVED: AA	06/16/15	
MATERIAL: ALLOY STEEL	SCALE	SIZE	PART/DRAWING NO.		REV.
FINISH: NICKEL PLATED	NONE	B	DOD-CG-SMB6		B
			MODEL	CG-SMB6	SHEET 1 OF 1