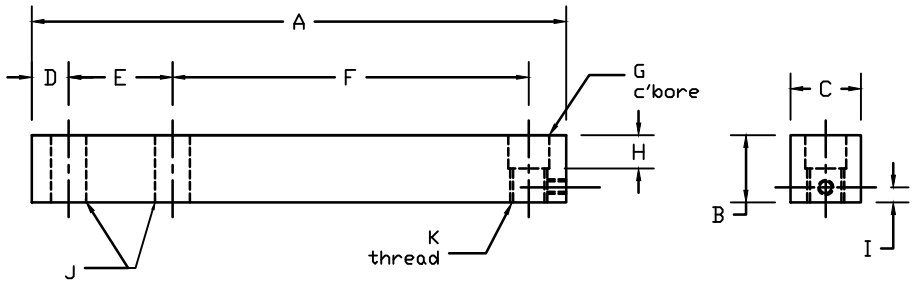


| REVISIONS | | | | | | | |
|-----------|------|----------------------------------|----------|-----|----|-----|------|
| ZONE | LTR. | DESCRIPTION | DATE | ECN | BY | CKD | APVD |
| - | - | INITIAL RELEASE | 10/01/08 | - | - | - | - |
| - | A | EDIT DRAWING AND DIMENSION TABLE | 9/09/09 | - | - | - | - |
| 2D | C | Remove 1.5K and 5K capacities | 7/23/12 | - | FR | AA | AA |



PERFORMANCE SPECIFICATIONS:

- CAPACITIES: 2.5K LB
- RATED OUTPUT: 3.00 mV/V \pm 0.1%
- SAFE OVERLOAD: 150% FS
- EXCITATION VOLTAGE: 10-20V AC/DC
- INPUT RESISTANCE: 1080 \pm 10 OHMS
- OUTPUT RESISTANCE: 1000 \pm 5 OHMS
- ZERO BALANCE: \pm 1.00% FS
- SEAL TYPE: ENVIRONMENTALLY SEALED
- NON-LINEARITY: \pm 0.03% FS
- HYSTERESIS: \pm 0.03% FS
- REPEATABILITY: \pm 0.01% FS
- CREEP: \pm 0.02% FS
- COMPENSATED TEMPERATURE RANGE: -10°C - +40°C
- TEMPERATURE EFFECT ON ZERO: \pm 0.0027%FS/°C
- TEMPERATURE EFFECT ON OUTPUT: \pm 0.0015%FS/°C
- INSULATION RESISTANCE: >5000 MEGOHMS
- LOAD CELL CABLE: 4 CONDUCTOR, 30 FT
- LOAD CELL WIRING:
 - GREEN +EXC
 - BLACK -EXC
 - WHITE +SIG
 - RED -SIG
 - BRAID/YELLOW: SHEILD
19. FM APPROVED

| RATED CAPACITY | DIMENSIONS | | | | | | | | | | |
|----------------|------------|------|------|------|------|------|------|------|------|------|-----------|
| | A | B | C | D | E | F | G | H | I | J | K |
| 2.5K | 9.00 | 1.13 | 1.25 | 0.62 | 1.75 | 6.00 | 0.69 | 0.50 | 0.25 | 0.53 | 5/8-18UNF |

'DO NOT ALTER WITHOUT AGENCY NOTIFICATION'

COTI GLOBAL SENSORS, INC.

CG-SBF SINGLE ENDED BEAM LOAD CELL

| | | | | |
|--|--|--------------|--|---------|
| | THIS DRAWING USES THIRD ANGLE PROJECTION | APPROVALS | | DATE |
| | | DRAWN: DH | | 9/09/09 |
| | | CHECKED: MB | | 9/09/09 |
| | | ENGINEER: DH | | 9/09/09 |
| TOLERANCES UNLESS OTHERWISE SPECIFIED .XX-±.01 .XXX-±.005 FRACTIONS-±1/16" ANGLES: ±1/2° | | APPROVED: AA | | 9/09/09 |
| THIS DOCUMENT CONTAINS PROPRIETARY INFORMATION AND SUCH INFORMATION MAY NOT BE REPRODUCED OR DISCLOSED FOR ANY PURPOSE OR USED TO PRODUCE THE ARTICLE OR SUBJECT WITHOUT WRITTEN PERMISSION FROM COTI GLOBAL SENSORS, INC. | | MATERIAL | | |
| | | ALLOY STEEL | | |

| | | | |
|--------------|------|------------------|--------------|
| SCALE | SIZE | PART/DRAWING NO. | REV. |
| NONE | B | DOD-CG-SBF | C |
| MODEL CG-SBF | | | SHEET 1 OF 1 |