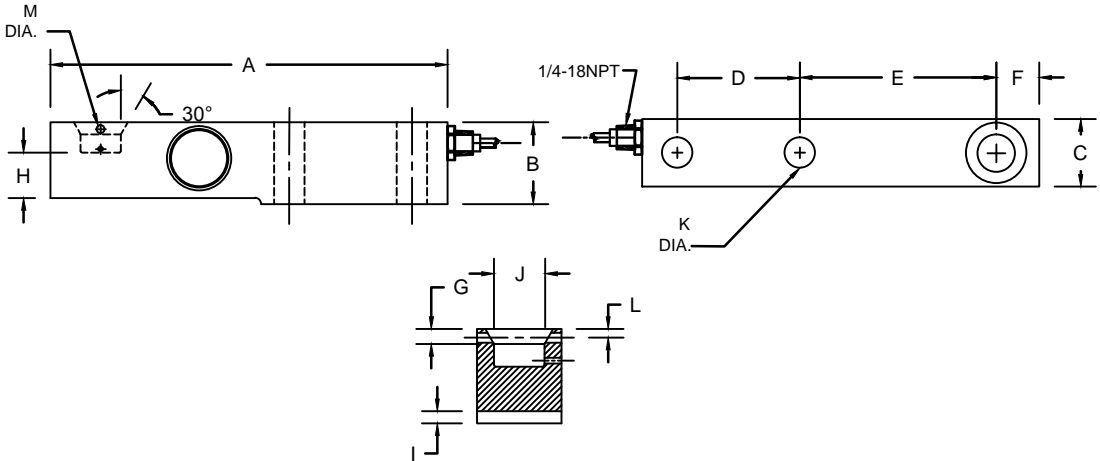


REVISIONS							
ZONE	LTR.	DESCRIPTION	DATE	ECN	BY	CKD	APVD
-	B	REDRAWN FOR LABELING CONSISTENCY	01/02/16	2016-70	TB	AB	AA

PERFORMANCE SPECIFICATIONS:

- CAPACITIES: 5KN, 10KN, 23KN, & 50KN LB
- RATED OUTPUT: 2.00 mV/V ±0.1%
- SAFE OVERLOAD: 150% FS
- EXCITATION VOLTAGE: 10-20V AC/DC
- INPUT RESISTANCE: 1100 ± 10 OHMS
- OUTPUT RESISTANCE: 1000 ± 5 OHMS
- ZERO BALANCE: ±1.00% FS
- SEAL TYPE: WELDEDS-SEAL
- NON-LINEARITY: ±0.03% FS
- HYSTERESIS: ±0.03% FS
- REPEATABILITY: ±0.01% FS
- CREEP: ±0.02% FS
- COMPENSATED TEMPERATURE RANGE: -10°C - +40°C
- TEMPERATURE EFFECT ON ZERO: ±0.0027%FS/°C
- TEMPERATURE EFFECT ON OUTPUT: ±0.0015%FS/°C
- INSULATION RESISTANCE: >5000 MEGOHMS
- LOAD CELL CABLE: 4 CONDUCTOR, 20 FT
- LOAD CELL WIRING:
 - GREEN +EXC
 - BLACK -EXC
 - WHITE +SIG
 - RED -SIG
 - BRAID/YELLOW: SHEILD
19. FM APPROVED



RATED CAPACITY	DIMENSIONS												
	A	B	C	D	E	F	G	H	I	J	K	L	M
5KN, 10KN, 23KN	6.10	1.41	1.18	1.37	3.14	0.59	0.27	0.82	0.23	0.70	0.51	0.15	0.15
50KN	7.50	1.93	1.69	1.57	4.13	0.82	0.23	1.12	0.31	0.98	0.82	0.31	0.15

"DO NOT ALTER WITHOUT AGENCY NOTIFICATION"

COTI GLOBAL SENSORS, INC.

**CG-SB4 SINGLE ENDED BEAM
LOAD CELL**

SCALE	SIZE	PART/DRAWING NO.	REV.
NONE	B	DOD-CG-SB4	B
MODEL	CG-SB4	SHEET 1 OF 1	

<p>THIS DRAWING USES THIRD ANGLE PROJECTION</p>	<p>TOLERANCES UNLESS OTHERWISE SPECIFIED</p> <p>.XX±.01</p> <p>.XXX±.005</p> <p>FRACTIONS±1/16"</p> <p>ANGLES: ±1/2°</p>	APPROVALS	DATE
		DRAWN: MTSI	10/01/08
		CHECKED: MB	10/01/08
		ENGINEER: AA	10/01/08
APPROVED: AA	10/01/08	MATERIAL	
STAINLESS STEEL			

THIS DOCUMENT CONTAINS PROPRIETARY INFORMATION AND SUCH INFORMATION MAY NOT BE REPRODUCED OR DISCLOSED FOR ANY PURPOSE OR USED TO PRODUCE THE ARTICLE OR SUBJECT WITHOUT WRITTEN PERMISSION FROM COTI GLOBAL SENSORS, INC.