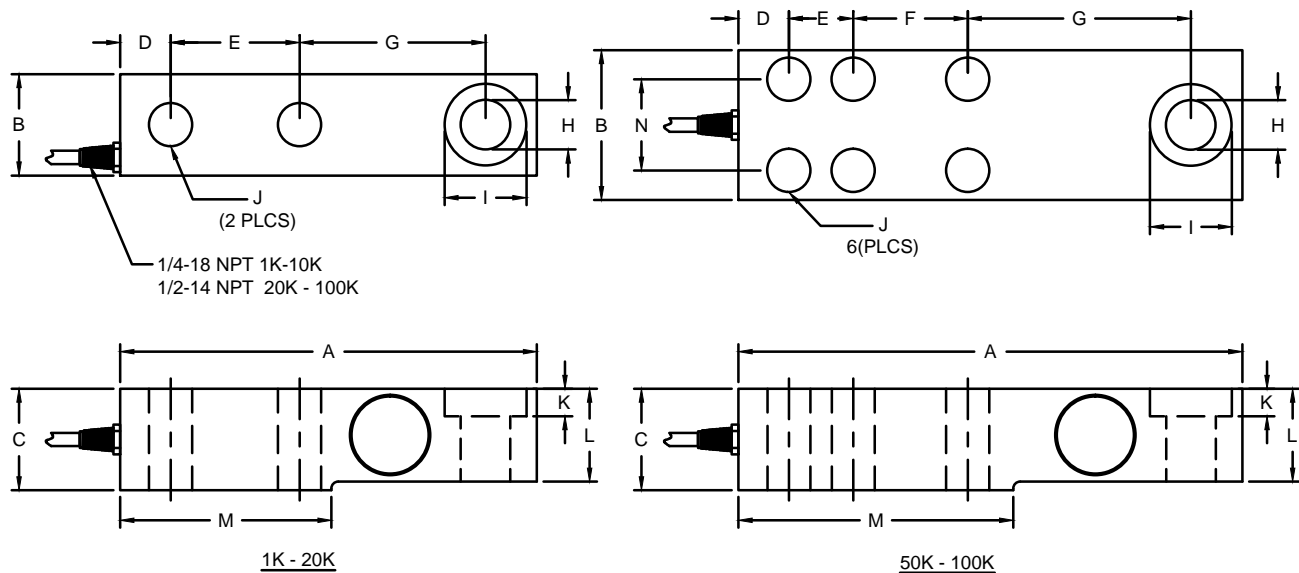


REVISIONS									
ZONE	LTR.	DESCRIPTION	DATE	ECN	BY	CKD	APVD		
-	C	REDRAWN FOR LABELING CONSISTENCY	01/02/16	2016-69	TB	AB	AA		



- PERFORMANCE SPECIFICATIONS: *NON-NTEP**
- CAPACITIES: 1K, 2K, 5K, 10K, 20K, *50K, *100K. (LB)
 - RATED OUTPUT: 2.00 mV/V $\pm 0.25\%$.
 - SAFE OVERLOAD: 150% FS.
 - EXCITATION VOLTAGE: 10V AC/DC (15V MAX).
 - INPUT RESISTANCE: 380 $\pm 10\Omega$.
 - OUTPUT RESISTANCE: 350 $\pm 3\Omega$.
 - ZERO BALANCE: $\pm 1.00\%$ FS.
 - SEAL TYPE: ENVIRONMENTALLY-SEAL IP67.
 - NON-LINEARITY: $\pm 0.03\%$ FS.
 - HYSTERESIS: $\pm 0.02\%$ FS.
 - REPEATABILITY: $\pm 0.01\%$ FS.
 - CREEP: $\pm 0.02\%$ FS IN 30 MINUTES.
 - NTEP RATED.
 - CLASS III, 5,000 DIVISION, MULTIPLE CELL.
 - COMPENSATED TEMPERATURE RANGE: -10°C TO $+40^{\circ}\text{C}$.
 - TEMPERATURE EFFECTON ZERO: $\pm 0.0027\%$ FS/ $^{\circ}\text{C}$.
 - TEMPERATURE EFFECT ON OUTPUT: $\pm 0.0015\%$ FS/ $^{\circ}\text{C}$.
 - INSULATION RESISTANCE: 5000 MEGOHMS.
 - LOAD CELL CABLE: 4-24AWG, $\varnothing 5.6\text{MM}$, PVC, 20FT. (1K-20K)
4-22AWG, $\varnothing 6.8\text{MM}$, BRAIDED 50FT. (50K-100K)
 - LOAD CELL WIRING:
GRN (+EXC)
BLK (-EXC)
WHT (+SIG)
RED (-SIG)
BRAID/YELLOW: SHIELD
 - FM APPROVED.

RATED CAPACITY	DIMENSIONS													
	A	B	C	D	E	F	G	H	I	J	K	L	M	N
1K - 5K	8.00	1.44	1.88	0.74	2.50	-	3.88	0.68	1.19	0.53	0.47	1.44	4.00	-
10K	9.25	1.88	2.75	0.81	2.62	-	4.88	1.00	1.63	0.88	0.62	1.88	4.62	-
20K	11.00	2.38	3.25	1.00	3.25	-	5.50	1.25	2.01	1.06	0.81	2.50	5.50	-
50K	14.75	3.75	4.62	0.71	2.00	3.00	7.12	1.75	2.89	0.88	1.21	3.19	7.38	2.00
100K	16.38	3.75	5.62	1.01	2.12	3.62	7.75	0.69	2.58	1.06	1.25	4.00	8.25	2.12

DO NOT ALTER WITHOUT AGENCY NOTIFICATION

COTI GLOBAL SENSORS, INC.

CG - SB3
NTEP LOAD CELL

<p>THIS DOCUMENT CONTAINS PROPRIETARY INFORMATION AND SUCH INFORMATION MAY NOT BE REPRODUCED OR DISCLOSED FOR ANY PURPOSE OR USED TO PRODUCE THE ARTICLE OR SUBJECT WITHOUT WRITTEN PERMISSION FROM COTI GLOBAL SENSORS, INC.</p>	<p>TOLERANCES UNLESS OTHERWISE SPECIFIED .XX = ± 0.02" .XXX = ± 0.005" .XXXX = ± 0.0002" FRACTIONS: $\pm 1/16$" ANGLES DEC: ± 18</p>	APPROVALS	DATE	<p>SCALE: NONE B SIZE: PART/DRAWING NO. MODEL: CG-SB3</p>
		DRAWN: RLU	06/15/15	
		CHECKED: AA	06/15/15	
		ENGINEER: JSP	06/15/15	
		APPROVED: AA	06/15/15	
<p>MATERIAL: 1K - 10K STAINLESS STEEL 20K - 100K ALLOY STEEL</p>		<p>FINISH: PASSIVATED/NICKEL PLATED</p>		
<p>SHEET 1 OF 1</p>				