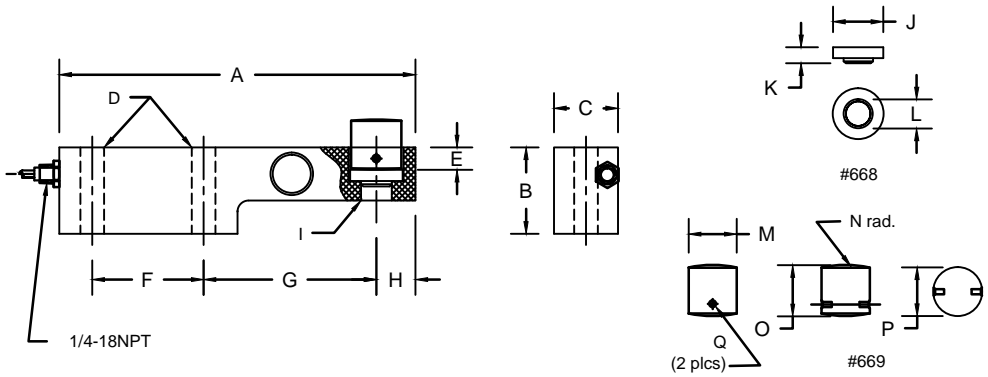


REVISIONS							
ZONE	LTR.	DESCRIPTION	DATE	ECN	BY	CKD	APVD
-	-	INITIAL RELEASE	10/01/08	-	-	-	-
-	B	REDRAWN FOR LABELING CONSISTENCY	11/19/15	2016-17	TB	AB	AA



- PERFORMANCE SPECIFICATIONS:**
- CAPACITIES: 2.5K, 5K, 10K & 20K LB
 - RATED OUTPUT: 2.00 mV/V ±0.1%
 - SAFE OVERLOAD: 150% FS
 - EXCITATION VOLTAGE: 10-20V AC/DC
 - INPUT RESISTANCE: 385 ±10 OHMS
 - OUTPUT RESISTANCE: 350 ±3 OHMS
 - ZERO BALANCE: ±1.00% FS
 - SEAL TYPE: ENVIRONMENTALLY SEALED, IP67
 - NON-LINEARITY: ±0.03% FS
 - HYSTERESIS: ±0.02% FS
 - REPEATABILITY: ±0.01% FS
 - CREEP: ±0.02% FS
 - NTEP RATED
 - CLASS 111 5,000 DIVISION, MULTIPLE CELL
 - COMPENSATED TEMPERATURE RANGE: -10°C - +40°C
 - TEMPERATURE EFFECT ON ZERO: ±0.0027%FS/°C
 - TEMPERATURE EFFECT ON OUTPUT: ±0.0015%FS/°C
 - INSULATION RESISTANCE: >5000 MEGOHMS
 - LOAD CELL CABLE: 4 CONDUCTOR, 30 FT
 - LOAD CELL WIRING:
 - GREEN +EXC
 - BLACK -EXC
 - WHITE +SIG
 - RED -SIG
 - BRAND/YELLOW: SHEILD
 - FM APPROVED

RATED CAPACITY	DIMENSIONS																	
	A	B	C	D	E	F	G	H	I	J	K	L	M	N	O	P	Q	
2.5K	8.00	1.94	1.44	0.53	0.50	2.50	3.88	0.88	3/4-16UNF	-	-	-	-	-	-	-	-	-
5K	8.00	1.94	1.44	0.53	0.50	2.50	3.88	0.88	3/4-16UNF	-	-	-	-	-	-	-	-	-
10K	9.00	2.46	2.00	0.78	0.50	2.00	5.25	1.00	0.68 DIA	-	-	-	-	-	-	-	-	-
20K	9.00	2.46	2.00	0.78	0.50	2.00	5.25	1.00	0.68 DIA	-	-	-	-	-	-	-	-	-
668 insert	-	-	-	-	-	-	-	-	-	1.175	.375	0.68	-	-	-	-	-	-
669 rocker pin	-	-	-	-	-	-	-	-	-	-	-	-	1.125	6.00	1.125	1.125	.125x.25	-

"DO NOT ALTER WITHOUT AGENCY NOTIFICATION"

COTI GLOBAL SENSORS, INC.

CG-SB250 SINGLE ENDED BEAM NTEP LOAD CELL

SCALE	SIZE	PART/DRAWING NO.	REV.
NONE	B	DOD-CG-SB250	B
MODEL CG-SB250		SHEET 1 OF 1	

	THIS DRAWING USES THIRD ANGLE PROJECTION	APPROVALS	DATE
	<small>THIS DOCUMENT CONTAINS PROPRIETARY INFORMATION AND SUCH INFORMATION MAY NOT BE REPRODUCED OR DISCLOSED FOR ANY PURPOSE OR USED TO PRODUCE THE ARTICLE OR SUBJECT WITHOUT WRITTEN PERMISSION FROM COTI GLOBAL SENSORS, INC.</small>	DRAWN: MTSI	10/01/08
CHECKED: MB		10/01/08	
ENGINEER: AA		10/01/08	
APPROVED: AA		10/01/08	
<small>TOLERANCES UNLESS OTHERWISE SPECIFIED .XX±.01 .XXX±.005 FRACTIONS±1/16" ANGLES: ±1/2°</small>		MATERIAL STAINLESS STEEL	