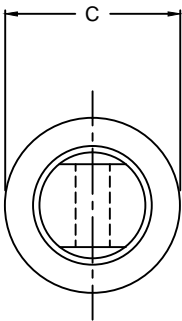
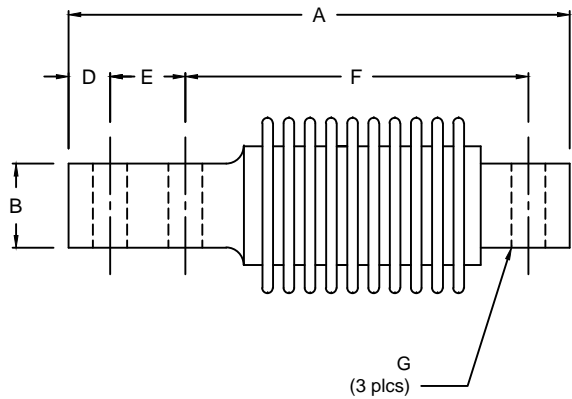


REVISIONS							
ZONE	LTR.	DESCRIPTION	DATE	ECN	BY	CKD	APVD
-	-	INITIAL RELEASE	10/01/08	-	-	-	-
-	B	REDRAWN FOR LABELING CONSISTENCY	11/19/15	2016-16	TB	AB	AA



PERFORMANCE SPECIFICATIONS:

- CAPACITIES: 15KG, 30KG, 50KG, 75KG, 150KG, 250KG, & 300KG
- RATED OUTPUT: 2.00 mV/V \pm 0.1%
- SAFE OVERLOAD: 150% FS
- EXCITATION VOLTAGE: 10-20V AC/DC
- INPUT RESISTANCE: 385 \pm 10 OHMS
- OUTPUT RESISTANCE: 350 \pm 3 OHMS
- ZERO BALANCE: \pm 1.00% FS
- SEAL TYPE: WELDED SEALED, IP67
- NON-LINEARITY: \pm 0.03% FS
- HYSTERESIS: \pm 0.02% FS
- REPEATABILITY: \pm 0.01% FS
- CREEP: \pm 0.02% FS
- NTEP RATED
- CLASS 111 3,000 DIVISION, SINGLE CELL
- COMPENSATED TEMPERATURE RANGE: -10°C - +40°C
- TEMPERATURE EFFECT ON ZERO: \pm 0.0027%FS/°C
- TEMPERATURE EFFECT ON OUTPUT: \pm 0.0015%FS/°C
- INSULATION RESISTANCE: >5000 MEGOHMS
- LOAD CELL CABLE: 4 CONDUCTOR, 20 FT
- LOAD CELL WIRING:
 GREEN +EXC
 BLACK -EXC
 WHITE +SIG
 RED -SIG
 BRAID/YELLOW: SHEILD
- FM APPROVED

RATED CAPACITY	DIMENSIONS						
	A	B	C	D	E	F	G
15KG-300KG	5.37	0.90	2.00	0.60	0.98	3.25	0.51

'DO NOT ALTER WITHOUT AGENCY NOTIFICATION'

COTI GLOBAL SENSORS, INC.

CG-LC22 SINGLE-ENDED BEAM NTEP LOAD CELL

APPROVALS		DATE
DRAWN: MTSI		10/01/08
CHECKED: MB		10/01/08
ENGINEER: AA		10/01/08
APPROVED: AA		10/01/08
MATERIAL		
ALLOY STEEL		

THIS DOCUMENT CONTAINS PROPRIETARY INFORMATION AND SUCH INFORMATION MAY NOT BE REPRODUCED OR DISCLOSED FOR ANY PURPOSE OR USED TO PRODUCE THE ARTICLE OR SUBJECT WITHOUT WRITTEN PERMISSION FROM COTI GLOBAL SENSORS, INC.

TOLERANCES UNLESS OTHERWISE SPECIFIED
 .XX-±.01
 .XXX-±.005
 FRACTIONS-±1/16"
 ANGLES: ±1/2"

SCALE	SIZE	PART/DRAWING NO.	REV.
NONE	B	DOD-CG-LC22	B
MODEL CG-LC22			SHEET 1 OF 1