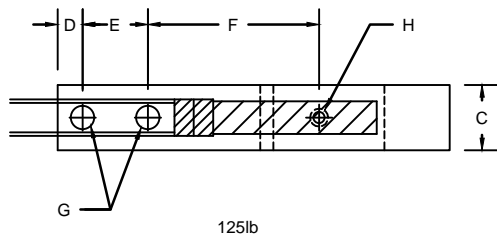
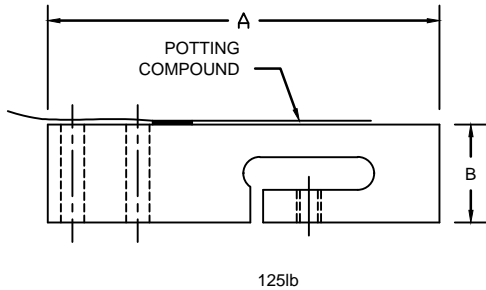
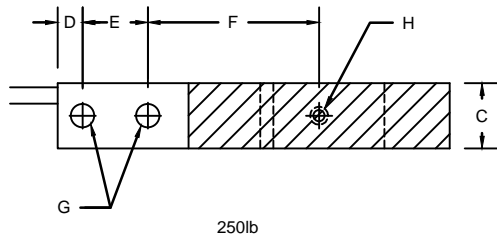
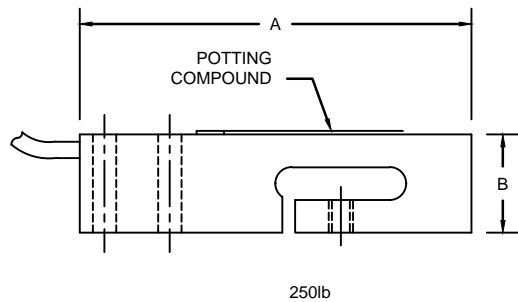


REVISIONS							
ZONE	LTR.	DESCRIPTION	DATE	ECN	BY	CKD	APVD
-	-	INITIAL RELEASE	10/01/08	-	-	-	-
-	B	REDRAWN FOR LABELING CONSISTENCY	12/15/15	2016-53	TB	AB	AA



- PERFORMANCE SPECIFICATIONS:**
- CAPACITIES: 125LB & 250LB
 - RATED OUTPUT: 2.00 mV/V \pm 10%
 - SAFE OVERLOAD: 150% FS
 - EXCITATION VOLTAGE: 10-20V AC/DC
 - INPUT RESISTANCE: 385 \pm 10 OHMS
 - OUTPUT RESISTANCE: 350 \pm 3 OHMS
 - ZERO BALANCE: \pm 1.00% FS
 - SEAL TYPE: ENVIRONMENTALLY SEALED, IP67
 - NON-LINEARITY: \pm 0.03% FS
 - HYSTERESIS: \pm 0.02% FS
 - REPEATABILITY: \pm 0.02% FS
 - CREEP: \pm 0.03% FS
 - COMPENSATED TEMPERATURE RANGE: -10°C - +40°C
 - TEMPERATURE EFFECT ON ZERO: \pm 0.02%FS/°C
 - TEMPERATURE EFFECT ON OUTPUT: \pm 0.001%FS/°C
 - INSULATION RESISTANCE: >5000 MEGOHMS
 - LOAD CELL CABLE: 4 CONDUCTOR, 10 FT
 - LOAD CELL WIRING:
 - GREEN +EXC
 - BLACK -EXC
 - WHITE +SIG
 - RED -SIG
 - BRAID/YELLOW: SHIELD
 - FM APPROVED



RATED CAPACITY	DIMENSIONS								
	A	B	C	D	E	F	G	H	
125LB	3.00	0.75	0.50	0.19	0.50	1.31	0.18	8-32UNF	
200LB-250LB	3.00	0.85	0.75	0.19	0.50	1.31	0.18	10-32UNF	

'DO NOT ALTER WITHOUT AGENCY NOTIFICATION'

COTI GLOBAL SENSORS, INC.

CG-FB SINGLE POINT
LOAD CELL

APPROVALS		DATE
DRAWN: MTSI		10/01/08
CHECKED: MB		10/01/08
ENGINEER: AA		10/01/08
APPROVED: AA		10/01/08
MATERIAL		
ALUMINUM		

THIS DOCUMENT CONTAINS PROPRIETARY INFORMATION AND SUCH INFORMATION MAY NOT BE REPRODUCED OR DISCLOSED FOR ANY PURPOSE OR USED TO PRODUCE THE ARTICLE OR SUBJECT WITHOUT WRITTEN PERMISSION FROM COTI GLOBAL SENSORS, INC.

TOLERANCES UNLESS OTHERWISE SPECIFIED
 XX- \pm 0.01
 .XXX- \pm 0.005
 FRACTIONS- \pm 1/16"
 ANGLES: \pm 1/2"

SCALE	SIZE	PART/DRAWING NO.	REV.
NONE	B	DOD-CG-FB	B
MODEL CG-FB			SHEET 1 OF 1