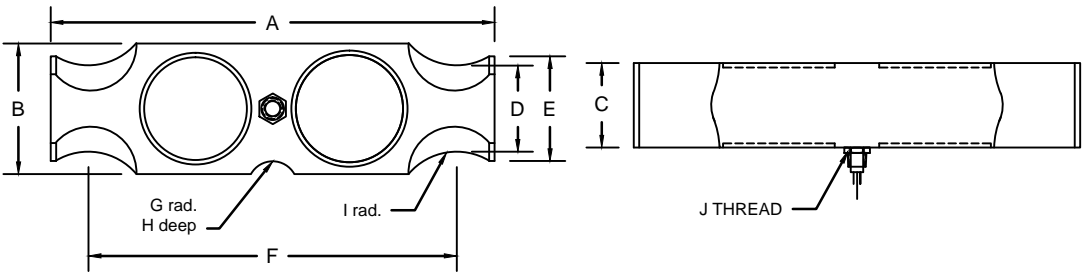


REVISIONS							
ZONE	LTR.	DESCRIPTION	DATE	ECN	BY	CKD	APVD
-	-	INITIAL RELEASE	10/01/08	-	-	-	-
-	B	EDIT DIMENSION TABLE	9/14/09	-	-	-	-
-	D	REDRAWN FOR LABELING CONSISTENCY	11/10/15	2016-44	TB	AB	AA



- PERFORMANCE SPECIFICATIONS:**
- CAPACITIES: 50K, 65K, & 100K LB
 - RATED OUTPUT: 3.00 mV/V $\pm 0.1\%$
 - SAFE OVERLOAD: 150% FS
 - EXCITATION VOLTAGE: 10-20V AC/DC
 - INPUT RESISTANCE: 700 ± 10 OHMS
 - OUTPUT RESISTANCE: 700 ± 5 OHMS
 - ZERO BALANCE: $\pm 1.00\%$ FS
 - SEAL TYPE: ENVIRONMENTALLY SEALED, IP67
 - NON-LINEARITY: $\pm 0.03\%$ FS
 - HYSTERESIS: $\pm 0.02\%$ FS
 - REPEATABILITY: $\pm 0.01\%$ FS
 - CREEP: $\pm 0.02\%$ FS
 - NTEP RATED
 - CLASS 111L 10,000 DIVISION, MULTIPLE CELL
 - COMPENSATED TEMPERATURE RANGE: $-10^{\circ}\text{C} - +40^{\circ}\text{C}$
 - TEMPERATURE EFFECT ON ZERO: $\pm 0.0027\%$ FS/ $^{\circ}\text{C}$
 - TEMPERATURE EFFECT ON OUTPUT: $\pm 0.0015\%$ FS/ $^{\circ}\text{C}$
 - INSULATION RESISTANCE: >5000 MEGOHMS
 - LOAD CELL CABLE: 4 CONDUCTOR, 50 FT BRAIDED SHIELD
 - LOAD CELL WIRING:
 - GREEN +EXC
 - BLACK -EXC
 - WHITE +SIG
 - RED -SIG
 - BRAID/YELLOW: SHIELD
 - FM APPROVED

RATED CAPACITY	DIMENSIONS									
	A	B	C	D	E	F	G	H	I	J
50K-100K	10.25	3.00	1.94	2.06	2.40	8.50	1.00	.311	1.00	1/2-14 NPT

"DO NOT ALTER WITHOUT AGENCY NOTIFICATION"

COTI GLOBAL SENSORS, INC.

**CG-BLC-2 DOUBLE ENDED BEAM
NTEP LOAD CELL**

SCALE	SIZE	PART/DRAWING NO.	REV.
NONE	B	DOD-CG-BLC-2	D
MODEL	CG-BLC-2	SHEET 1 OF 1	

<p>THIS DRAWING USES THIRD ANGLE PROJECTION</p>	<p>TOLERANCES UNLESS OTHERWISE SPECIFIED</p> <p>XX\pm0.01</p> <p>.XXX\pm0.005</p> <p>FRACTIONS\pm1/16"</p> <p>ANGLES: $\pm 1/2^{\circ}$</p>	APPROVALS	DATE
		DRAWN: DH	9/14/09
		CHECKED: MB	9/14/09
		ENGINEER: DH	9/14/09
APPROVED: AA	9/14/09	MATERIAL	
ALLOY STEEL			

THIS DOCUMENT CONTAINS PROPRIETARY INFORMATION AND SUCH INFORMATION MAY NOT BE REPRODUCED OR DISCLOSED FOR ANY PURPOSE OR USED TO PRODUCE THE ARTICLE OR SUBJECT WITHOUT WRITTEN PERMISSION FROM COTI GLOBAL SENSORS, INC.