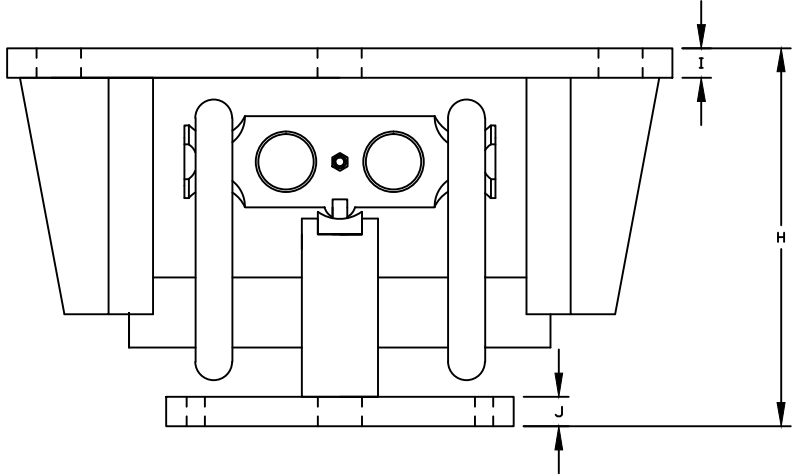
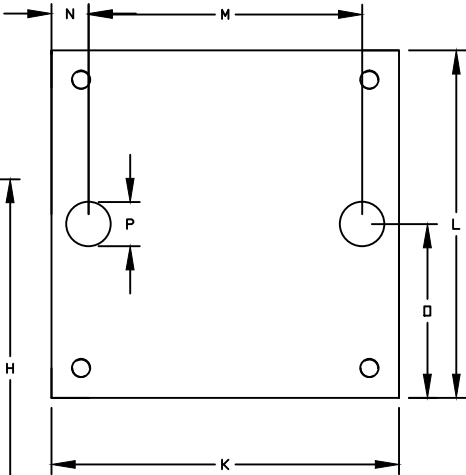
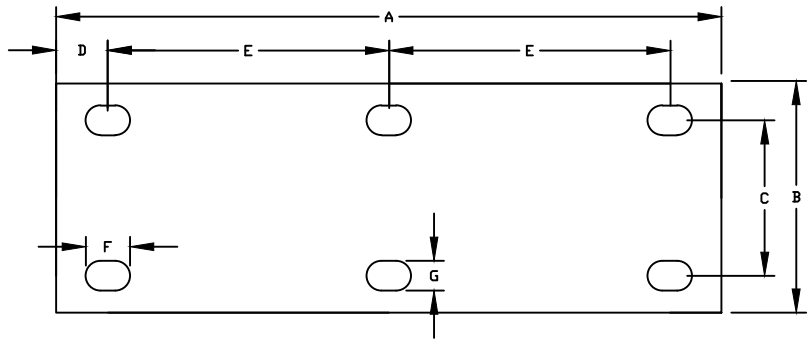


REVISIONS							
ZONE	LTR.	DESCRIPTION	DATE	ECN	BY	CKD	APVD
-	-	INITIAL RELEASE	2/18/11	-	-	-	-



- PERFORMANCE SPECIFICATIONS:**
- MODEL/CAPACITIES:  
CG-BE40M 75KSE / 25K,40K,50KSE,60KSE,75KSE  
CG-BE40M 75K / 50K,60K,75K
  - SAFE OVERLOAD: 150% FS
  - FULL SCALE OUTPUT: 3.00 mV/V
  - EXCITATION VOLTAGE: 10-15V AC/DC
  - LOAD CELL RESISTANCE: 350 OHMS
  - LOAD CELL CABLE: 4 CONDUCTOR, 20 FT
  - OPERATING TEMPERATURE RANGE: -20°C - +60°C
  - MATERIAL: ALLOY STEEL

RATED CAPACITY	DIMENSIONS															
	A	B	C	D	E	F	G	H	I	J	K	L	M	N	O	P
CG-BE40M 25K-75KSE	18.50	7.75	5.25	1.75	7.50	1.50	1.00	9.88	1.00	1.00	11.75	11.75	9.25	1.25	5.88	1.50
CG-BE40M 50K-75K	22.50	7.75	5.25	1.75	9.50	1.50	1.00	12.93	1.00	1.00	11.75	11.75	9.25	1.25	5.88	1.50

THIS DOCUMENT CONTAINS PROPRIETARY INFORMATION AND SUCH INFORMATION MAY NOT BE REPRODUCED OR DISCLOSED FOR ANY PURPOSE OR USED TO PRODUCE THE ARTICLE OR SUBJECT WITHOUT WRITTEN PERMISSION FROM COTI GLOBAL SENSORS, INC.

THIS DRAWING USES THIRD ANGLE PROJECTION  
TOLERANCES UNLESS OTHERWISE SPECIFIED

APPROVALS	DATE
DRAWN: DH	2/18/11
CHECKED: MB	2/18/11
ENGINEER: DH	2/18/11
APPROVED: AA	2/18/11

\*DO NOT ALTER WITHOUT AGENCY NOTIFICATION\*

**COTI GLOBAL SENSORS, INC.**

**CG-BE40M  
TRUCK MOUNT**

SCALE	SIZE	PART/DRAWING NO.	REV.
NONE	B	CG-BE40M	-

MODEL CG-BE40M SHEET 1 OF 1