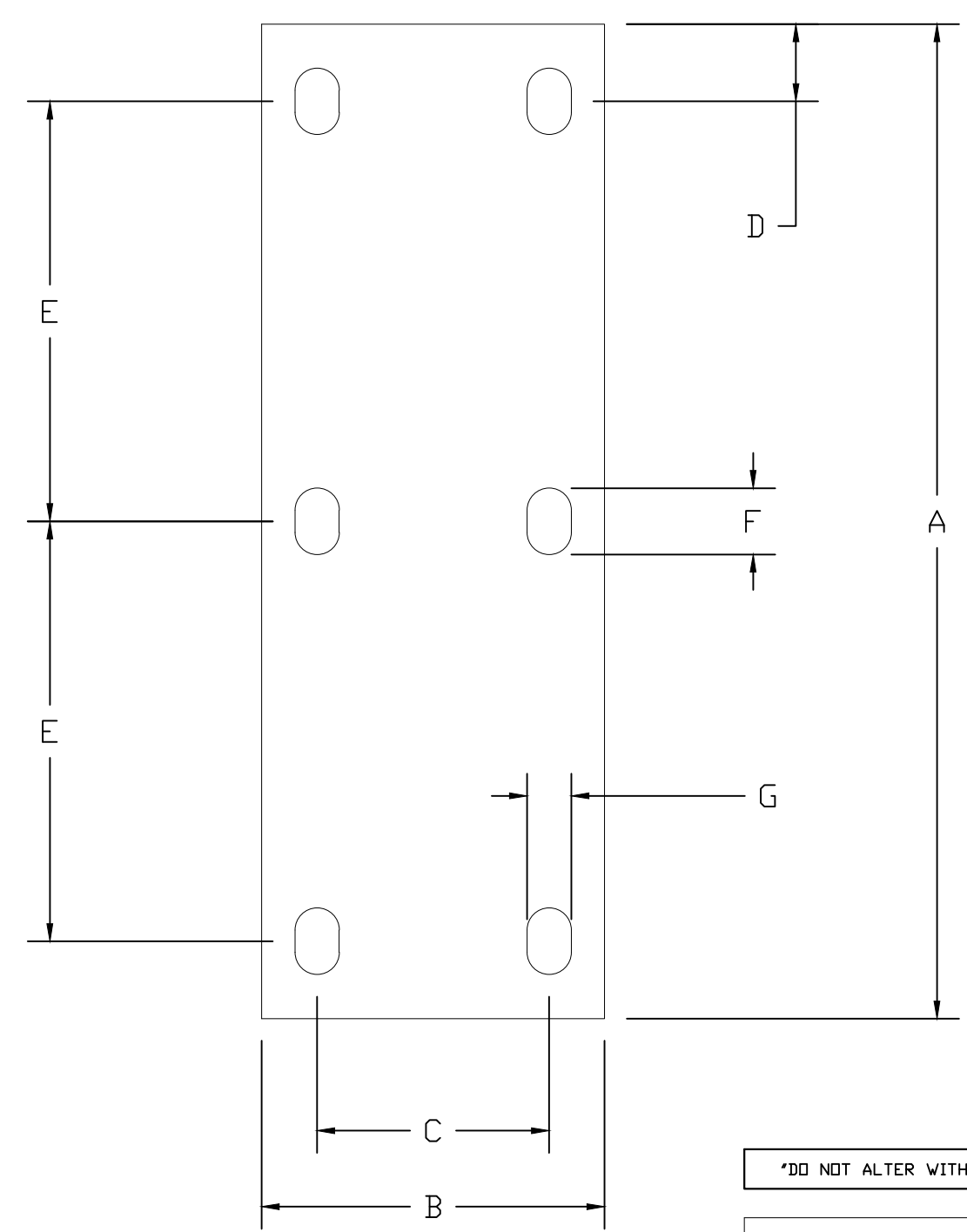
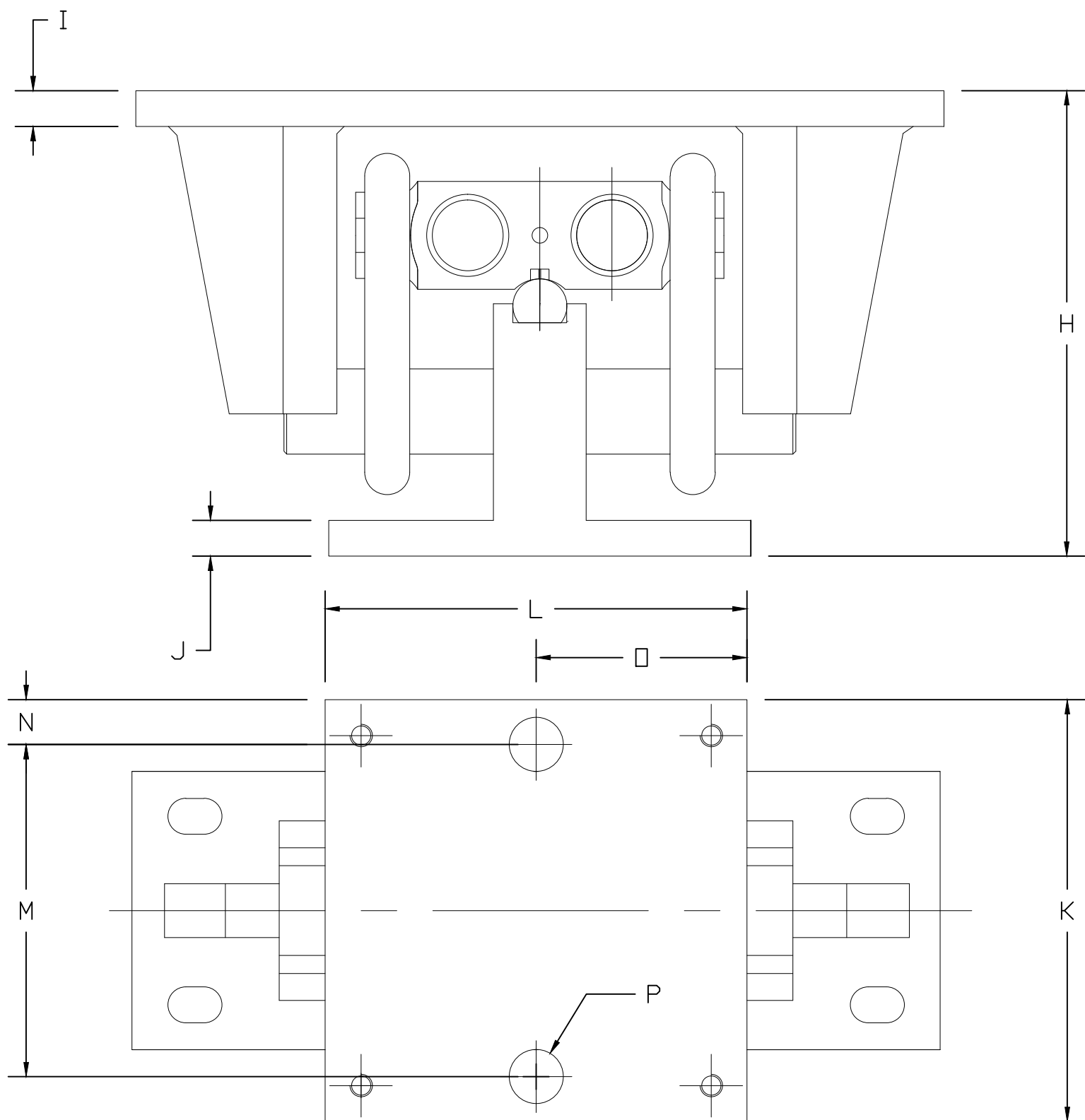


REVISIONS							
ZONE	LTR.	DESCRIPTION	DATE	ECN	BY	CKD	APVD
-	-	INITIAL RELEASE	11/07/12	-	FR	AA	AA



RATED CAPACITY	DIMENSIONS															
	A	B	C	D	E	F	G	H	I	J	K	L	M	N	□	P
50K-125K	22.50	7.75	5.25	1.75	9.50	1.50	1.00	12.93	1.00	1.00	11.75	11.75	9.25	1.25	5.88	1.50

THIS DOCUMENT CONTAINS PROPRIETARY INFORMATION AND SUCH INFORMATION MAY NOT BE REPRODUCED OR DISCLOSED FOR ANY PURPOSE OR USED TO PRODUCE THE ARTICLE OR SUBJECT WITHOUT WRITTEN PERMISSION FROM COTI GLOBAL SENSORS, INC.

THIS DRAWING USES THIRD ANGLE PROJECTION

TOLERANCES UNLESS OTHERWISE SPECIFIED  
 .XX±.01  
 .XXX±.005  
 FRACTIONS ±1/16"  
 ANGLES: ±1/2"

APPROVALS		DATE
DRAWN:	FR	09/08/12
CHECKED:	AA	09/08/12
ENGINEER:	FR	09/08/12
APPROVED:	AA	09/08/12
MATERIAL		
ALLOY STEEL		

\*DO NOT ALTER WITHOUT AGENCY NOTIFICATION\*

**COTI GLOBAL SENSORS, INC.**

**CG-5223M DUAL LINK MOUNT**  
**NTEP 50K to 125K LOAD CELL**

SCALE	SIZE	PART/DRAWING NO.	REV.
NONE	B	DOD-CG-5223M	-
MODEL CG-5223M			SHEET 1 OF 1