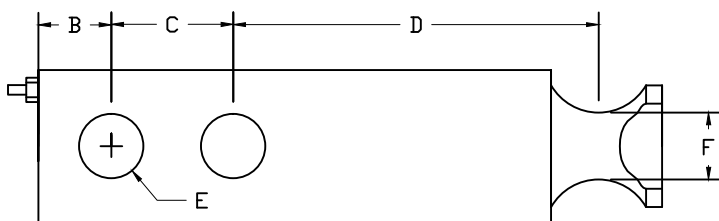
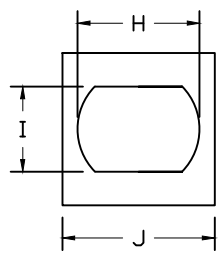
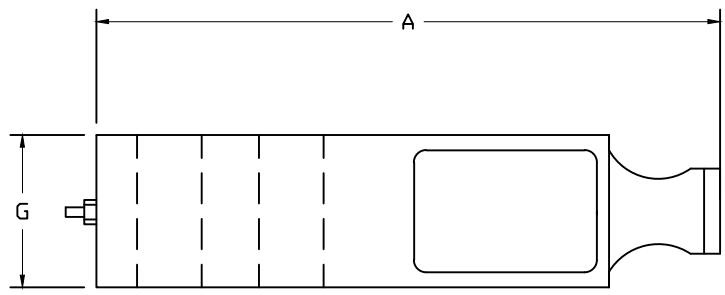


REVISIONS							
ZONE	LTR.	DESCRIPTION	DATE	ECN	BY	CKD	APVD
-	-	INITIAL RELEASE	04/21/11	-	-	-	-



PERFORMANCE SPECIFICATIONS:

- CAPACITIES: 1K, 2K, 2.5K, 4K, 5KSE, 5KLE, 10K
- RATED OUTPUT: 3.00 mV/V
- SAFE OVERLOAD: 150% FS
- EXCITATION VOLTAGE: 10-15V AC/DC
- INPUT RESISTANCE: 385 ±10 OHMS
- OUTPUT RESISTANCE: 350 ±3 OHMS
- ZERO BALANCE: ±1.00% FS
- SEAL TYPE: ENVIRONMENTALLY SEALED.
- COMPENSATED TEMPERATURE RANGE: -10°C - +40°C
- TEMPERATURE EFFECT ON ZERO: ±0.02%FS/10°C
- TEMPERATURE EFFECT ON OUTPUT: ±0.02%FS/10°C
- INSULATION RESISTANCE: >5000 MEGOHMS
- LOAD CELL CABLE: 4 CONDUCTOR, 20 FT
- LOAD CELL WIRING:
 - GREEN +EXC
 - BLACK -EXC
 - WHITE +SIG
 - RED -SIG
 - BRAID/YELLOW: SHIELD

RATED CAPACITY	DIMENSIONS										
	A	B	C	D	E	F	G	H	I	J	
1K-5KSE	5.12	0.60	1.00	3.00	0.53	0.55	1.25	1.00	0.70	1.25	
5KLE-10K	6.75	0.75	1.50	3.75	0.78	0.85	1.50	1.20	0.90	1.50	

"DO NOT ALTER WITHOUT AGENCY NOTIFICATION"

COTI GLOBAL SENSORS, INC.

CG-30410 SINGLE ENDED BEAM LOAD CELL

<p>THIS DRAWING USES THIRD ANGLE PROJECTION</p>	<p>TOLERANCES UNLESS OTHERWISE SPECIFIED</p> <p>BY Y&B</p> <p>04/21/11</p> <p>04/21/11</p> <p>04/21/11</p> <p>04/21/11</p>	APPROVALS	DATE
		DRAWN: DH	04/21/11
		CHECKED: MB	04/21/11
		ENGINEER: DH	04/21/11
APPROVED: AA		04/21/11	
MATERIAL		ALLOY STEEL	

THIS DOCUMENT CONTAINS PROPRIETARY INFORMATION AND SUCH INFORMATION MAY NOT BE REPRODUCED OR DISCLOSED FOR ANY PURPOSE OR USED TO PRODUCE THE ARTICLE OR SUBJECT WITHOUT WRITTEN PERMISSION FROM COTI GLOBAL SENSORS, INC.

SCALE	SIZE	PART/DRAWING NO.	REV.
NONE	B	DOD-CG-30410	-
MODEL CG-30410		SHEET 1 OF 1	