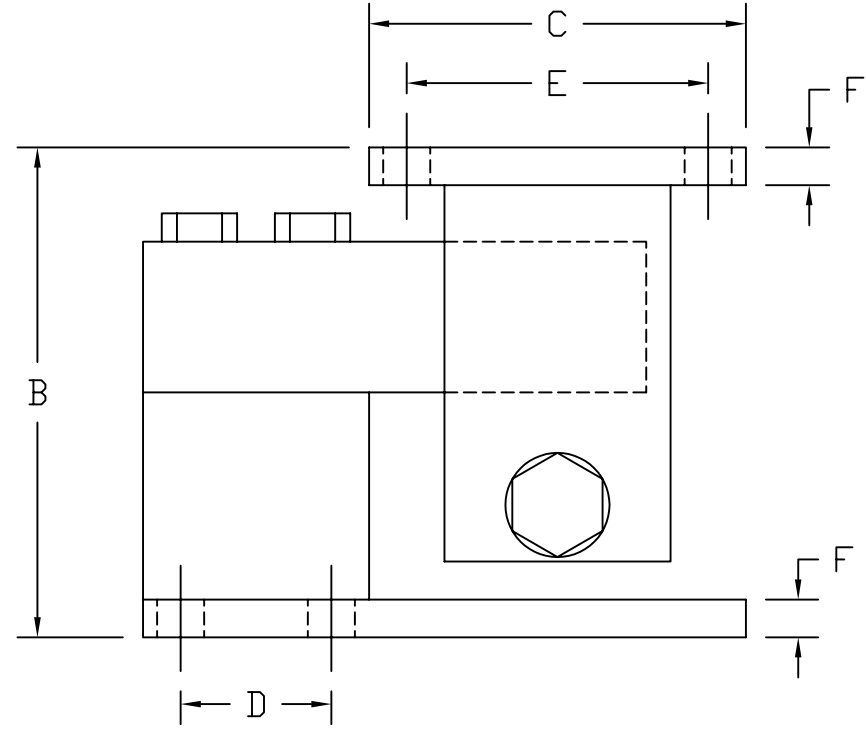
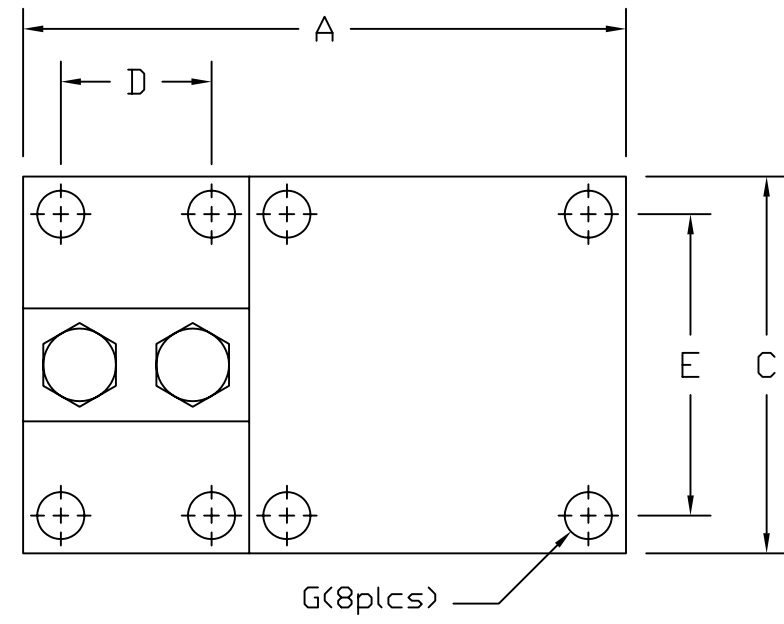


REVISIONS							
ZONE	LTR.	DESCRIPTION	DATE	ECN	BY	CKD	APVD
-	-	INITIAL RELEASE	10/01/08	-	-	-	-



**PERFORMANCE SPECIFICATIONS:**

- CAPACITIES: 250LB, 500LB, 1K, 1.5K, 2K, 2.5K, 4K, 5KSE, 5K, & 10K LB
- SAFE OVERLOAD: 150% FS
- FULL SCALE OUTPUT: 3.00 mV/V
- EXCITATION VOLTAGE: 10-15V AC/DC
- LOAD CELL RESISTANCE: 350 OHMS
- LOAD CELL CABLE: 4 CONDUCTOR, 20 FT
- OPERATING TEMPERATURE RANGE: -20°C - +60°C
- MATERIAL  
LOAD CELL: ALLOY STEEL (NICKEL PLATED) OR STAINLESS STEEL  
ASSEMBLY: MILD STEEL (NICKEL PLATED) OR STAINLESS STEEL

RATED CAPACITY	DIMENSIONS									
	A	B	C	D	E	F	G			
250LB-5KSE	7.00	5.00	5.00	2.00	4.00	0.50	0.62			
5K-10K	8.00	6.50	5.00	3.00	4.00	0.50	0.62			

\*DO NOT ALTER WITHOUT AGENCY NOTIFICATION\*

**COTI GLOBAL SENSORS, INC.**

**CG-23M  
TANK MOUNT**

	APPROVALS		DATE
	DRAWN: MTSI	CHECKED: MB	10/01/08
THIS DOCUMENT CONTAINS PROPRIETARY INFORMATION AND SUCH INFORMATION MAY NOT BE REPRODUCED OR DISCLOSED FOR ANY PURPOSE OR USED TO PRODUCE THE ARTICLE OR SUBJECT WITHOUT WRITTEN PERMISSION FROM COTI GLOBAL SENSORS, INC.	TOLERANCES UNLESS OTHERWISE SPECIFIED		
	.XX-±.01 .XXX-±.005 FRACTIONS-±1/16" ANGLES: ±1/2"		
MATERIAL		SEE NOTES	

SCALE	SIZE	PART/DRAWING NO.	REV.
NONE	B	DOD-CG-23M	-
MODEL CG-23M			SHEET 1 OF 1