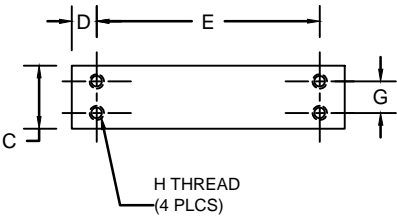
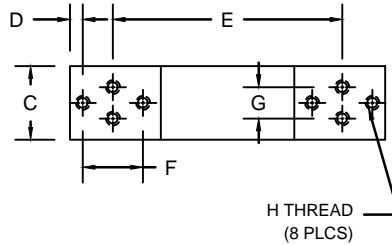


REVISIONS							
ZONE	LTR.	DESCRIPTION	DATE	ECN	BY	CKD	APVD
-	-	INITIAL RELEASE	10/01/08	-	-	-	-
-	-	ADDED "G" TO DRAWING	9/29/09	-	-	-	-
-	D	REDRAWN FOR LABELING CONSISTENCY	12/15/15	2016-21	TB	AB	AA



3 KG to 30KG



60KG to 100KG

RATED CAPACITY	DIMENSIONS							
	A	B	C	D	E	F	G	H
3KG	2.76	0.87	0.59	0.24	2.28	-	0.28	M3
5KG-30KG	5.12	0.87	1.18	0.47	4.17	-	0.59	M6
60KG-100KG	5.91	1.57	1.38	0.28	4.61	0.75	0.59	M6

PERFORMANCE SPECIFICATIONS: *NON-NTEP

- CAPACITIES: *3KG, *5KG, *6KG, *7KG, 10KG, 15KG, 20KG, 30KG, 60KG, 75KG, & 100KG
- RATED OUTPUT: 2.00 mV/V ±10%
- SAFE OVERLOAD: 150% FS
- EXCITATION VOLTAGE: 10-20V AC/DC
- INPUT RESISTANCE: 410 ±10 OHMS
- OUTPUT RESISTANCE: 350 ±3 OHMS
- ZERO BALANCE: ±1.00% FS
- SEAL TYPE: ENVIRONMENTALLY SEALED
- NON-LINEARITY: ±0.02% FS
- HYSTERESIS: ±0.02% FS
- REPEATABILITY: ±0.02% FS
- CREEP: ±0.03% FS
- NTEP RATED
- CLASS 111 5,000 DIVISION, SINGLE CELL
- COMPENSATED TEMPERATURE RANGE: -10°C - +40°C
- TEMPERATURE EFFECT ON ZERO: ±0.002%FS/°C
- TEMPERATURE EFFECT ON OUTPUT: ±0.001%FS/°C
- INSULATION RESISTANCE: >5000 MEGOHMS
- LOAD CELL CABLE: 4 CONDUCTOR, 10 FT
- LOAD CELL WIRING:
 - GREEN +EXC
 - BLACK -EXC
 - WHITE +SIG
 - RED -SIG
 - BRAID/YELLOW: SHEILD
- FM APPROVED
- MAX PLATFORM SIZE: 350 X 350 mm

"DO NOT ALTER WITHOUT AGENCY NOTIFICATION"

COTI GLOBAL SENSORS, INC.

CG-22 SINGLE POINT CELL
NTEP LOAD CELL

APPROVALS	DATE	
	DRAWN: DH	9/29/09
CHECKED: MB	9/29/09	
ENGINEER: DH	9/29/09	
APPROVED: AA	9/29/09	
MATERIAL	ALUMINUM	

THIS DOCUMENT CONTAINS PROPRIETARY INFORMATION AND SUCH INFORMATION MAY NOT BE REPRODUCED OR DISCLOSED FOR ANY PURPOSE OR USED TO PRODUCE THE ARTICLE OR SUBJECT WITHOUT WRITTEN PERMISSION FROM COTI GLOBAL SENSORS, INC.

TOLERANCES UNLESS OTHERWISE SPECIFIED
XX±.01
.XXX±.005
FRACTIONS±1/16"
ANGLES: ±1/2°

SCALE	SIZE	PART/DRAWING NO.	REV.
NONE	B	DOD-CG-22	D
MODEL	CG-22	SHEET 1 OF 1	