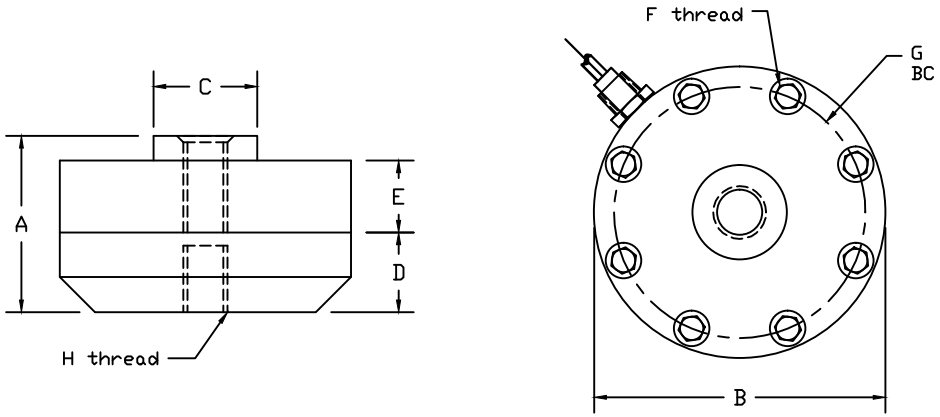


REVISIONS							
ZONE	LTR.	DESCRIPTION	DATE	ECN	BY	CKD	APVD
-	-	INITIAL RELEASE	10/01/08	-	-	-	-



- PERFORMANCE SPECIFICATIONS:**
1. CAPACITIES: 5K & 10K LB
 2. RATED OUTPUT: 4.00 mV/V
 3. SAFE OVERLOAD: 150% FS
 4. EXCITATION VOLTAGE: 10-20V AC/DC
 5. INPUT RESISTANCE: 380 ±10 OHMS
 6. OUTPUT RESISTANCE: 350 ±5 OHMS
 7. ZERO BALANCE: ±1.00% FS
 8. SEAL TYPE: HERMETICALLY SEALED, IP67
 9. NON-LINEARITY: ±0.05% FS
 10. HYSTERESIS: ±0.03% FS
 11. REPEATABILITY: ±0.01% FS
 12. CREEP: ±0.03% FS
 13. COMPENSATED TEMPERATURE RANGE: -10°C - +40°C
 14. TEMPERATURE EFFECT ON ZERO: ±0.0027%/FS/°C
 15. TEMPERATURE EFFECT ON OUTPUT: ±0.0015%/FS/°C
 16. INSULATION RESISTANCE: >5000 MEGOHMS
 17. LOAD CELL CABLE: 4 CONDUCTOR, 20 FT
 18. LOAD CELL WIRING:
 - GREEN +EXC
 - BLACK -EXC
 - WHITE +SIG
 - RED -SIG
 - BRAID/YELLOW: SHIELD
 19. FM APPROVED

RATED CAPACITY	DIMENSIONS									
	A	B	C	D	E	F	G	H		
5K	2.50	4.13	1.34	1.13	1.02	M6	3.562	5/8-18UNF		
10K	2.50	4.13	1.34	1.13	1.02	M6	3.562	5/8-18UNF		

'DO NOT ALTER WITHOUT AGENCY NOTIFICATION'				
COTI GLOBAL SENSORS, INC.				
CG-1210 UNIVERSAL CANISTER LOAD CELL				
APPROVALS		DATE		
DRAWN:				
CHECKED:				
ENGINEER:				
APPROVED:				
MATERIAL:	STAINLESS STEEL			
TOLERANCES UNLESS OTHERWISE SPECIFIED BY Y&B DOD/CS/PLI/FBI/A CS-QS/UM/FBA	SCALE	SIZE	PART/DRAWING NO.	REV.
	NONE	B	DOD-CG-1210	A
	MODEL CG-1210			SHEET 1 OF 1